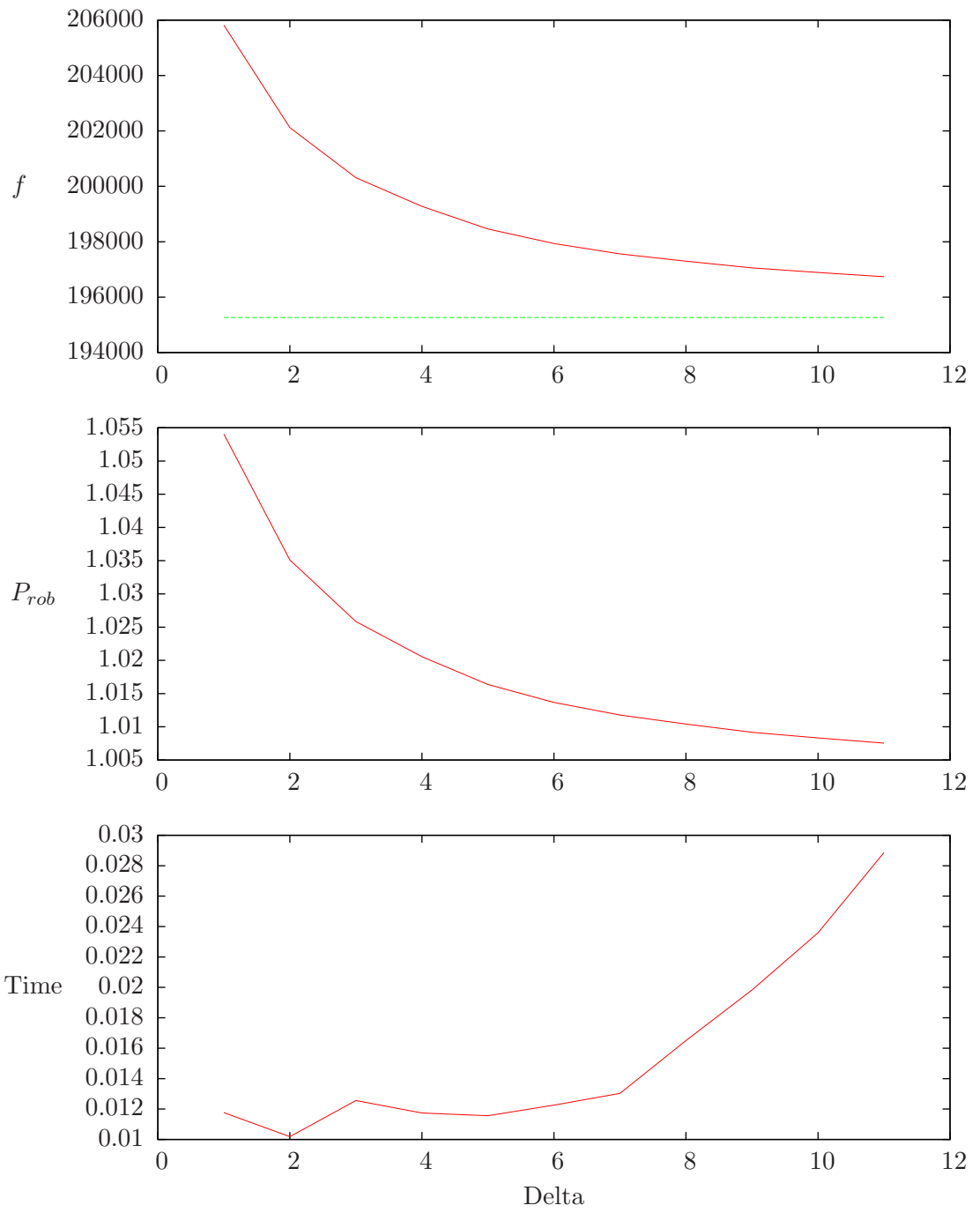
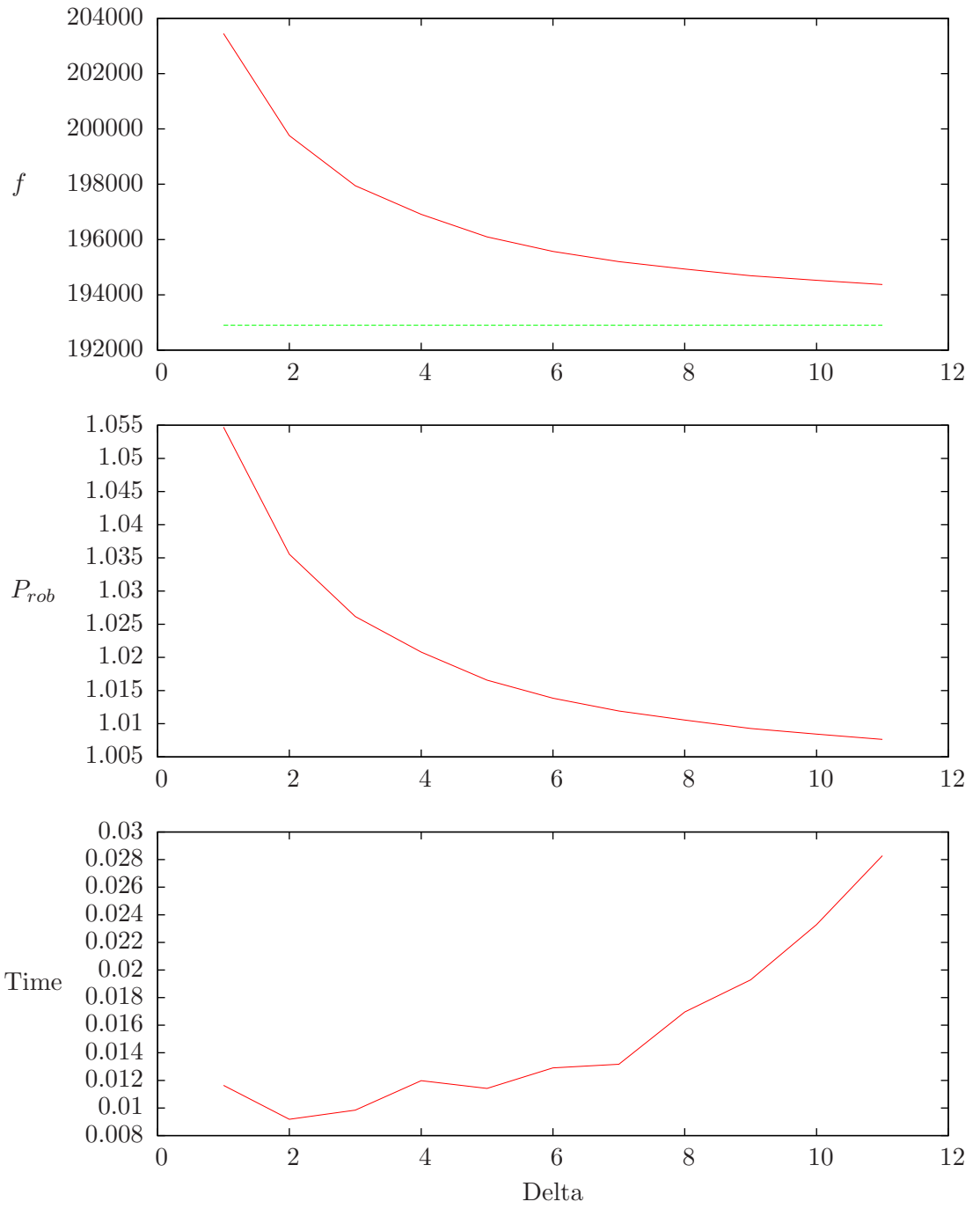


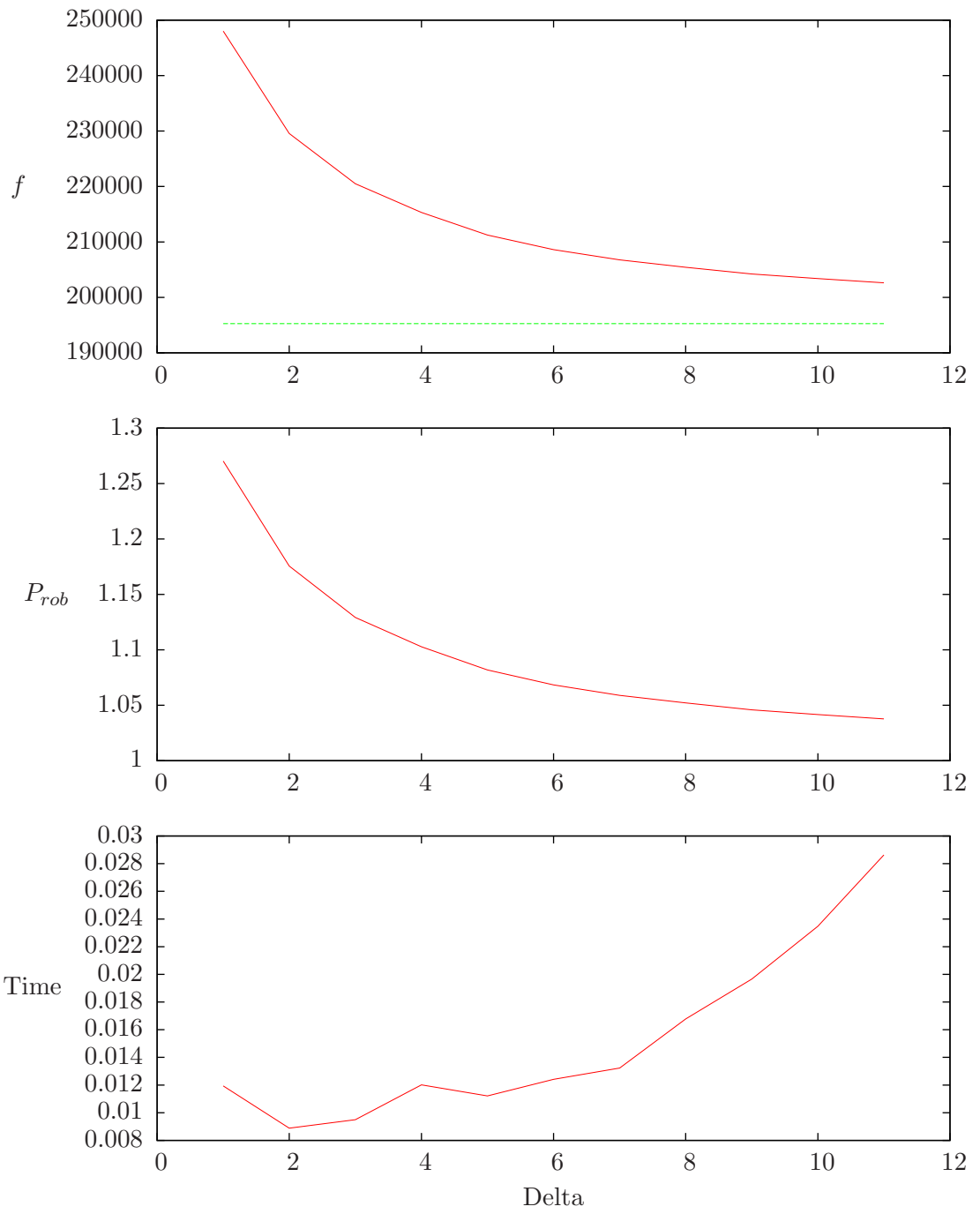
brbo.txt,  $L = avg$ ,  $\alpha = 1$



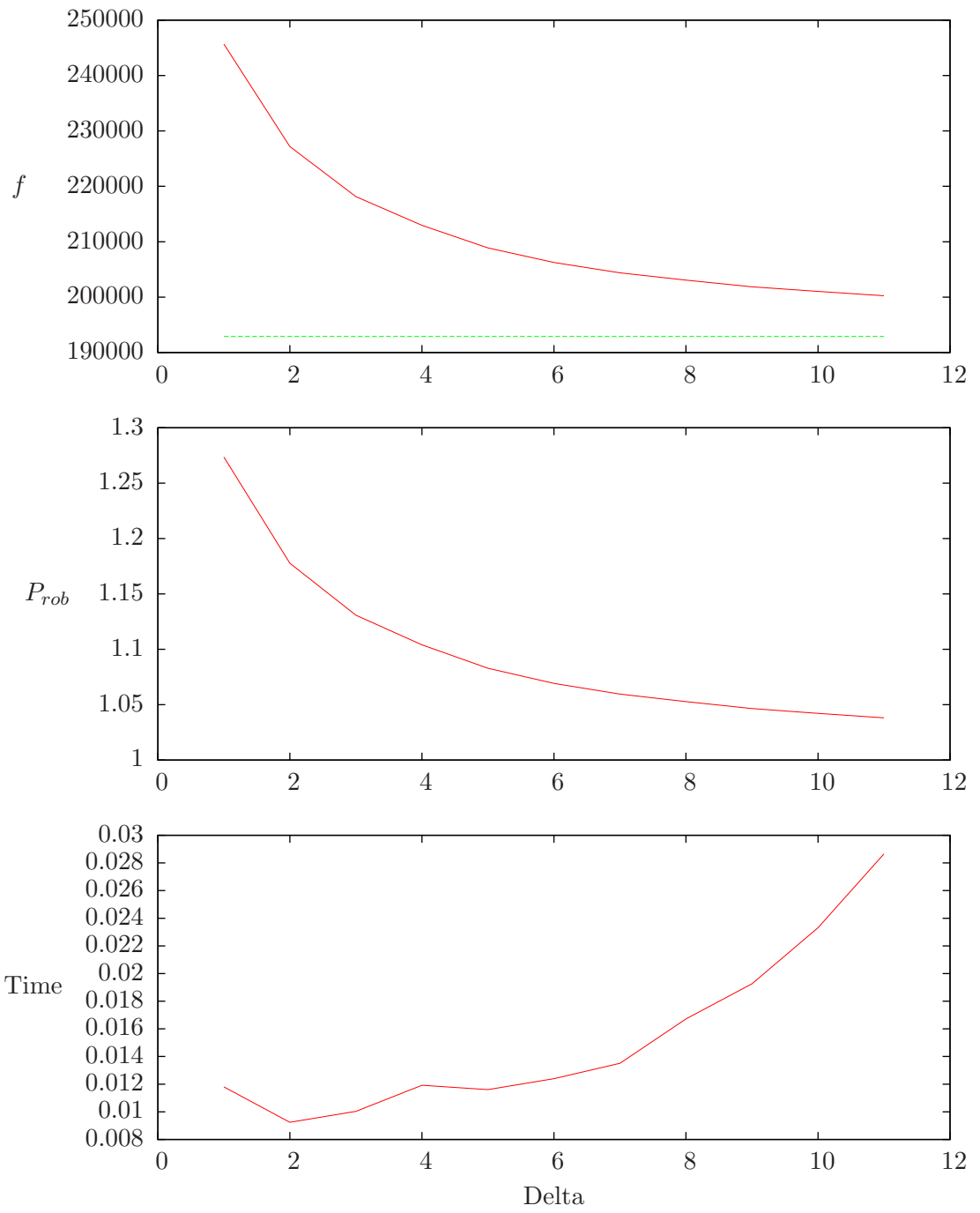
brbo.txt, real  $L$ ,  $\alpha = 1$



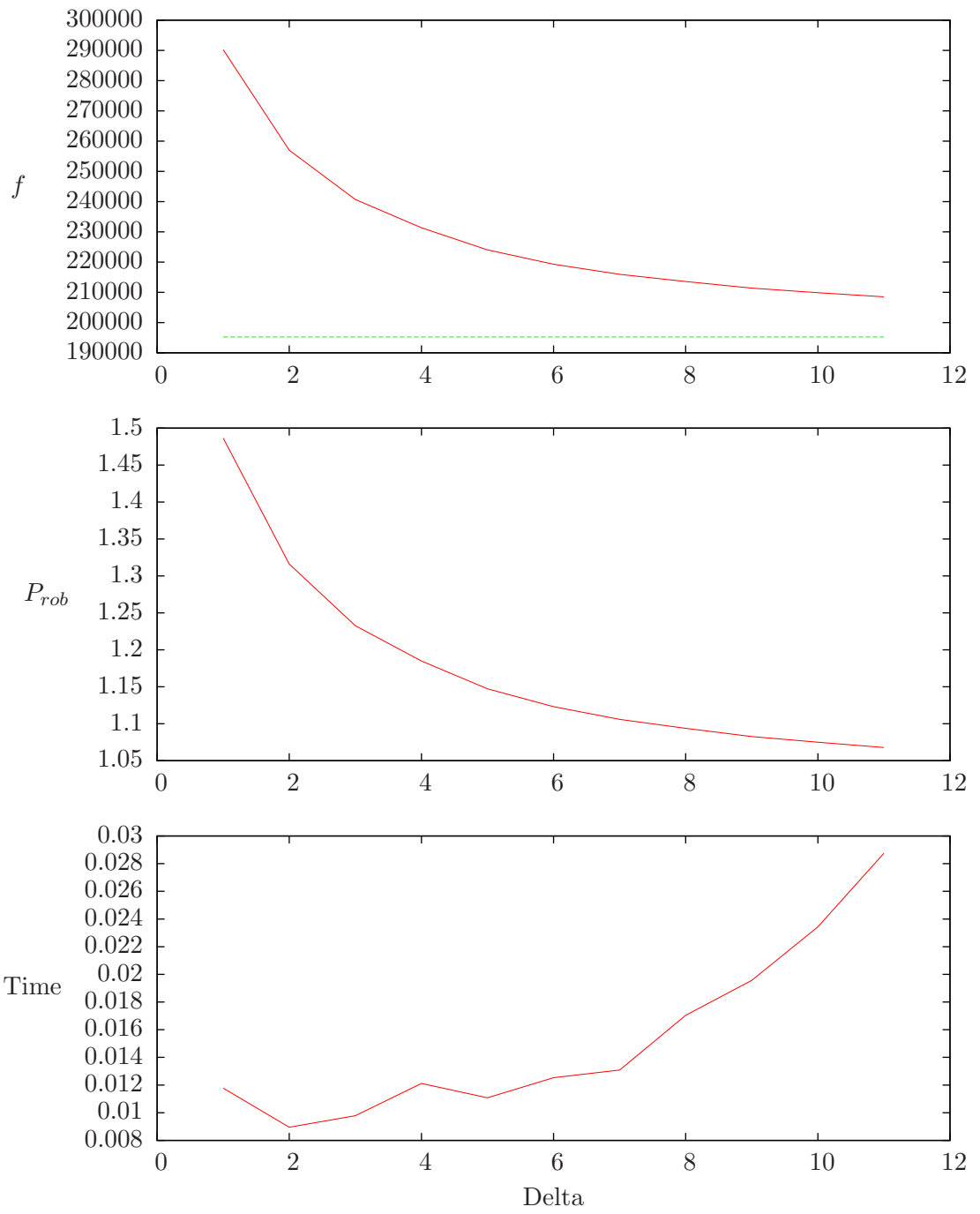
brbo.txt,  $L = avg$ ,  $\alpha = 5$



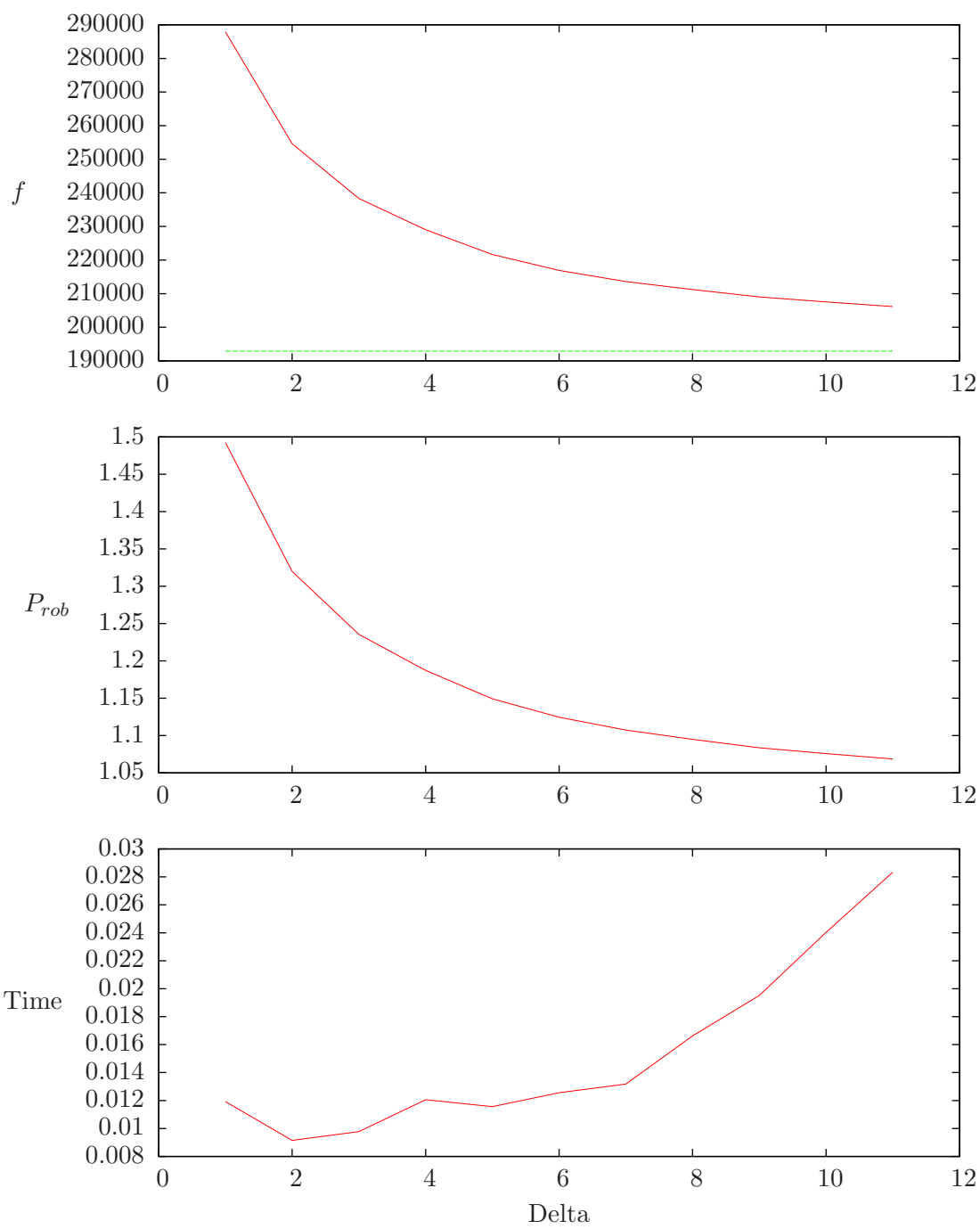
brbo.txt, real  $L$ ,  $\alpha = 5$



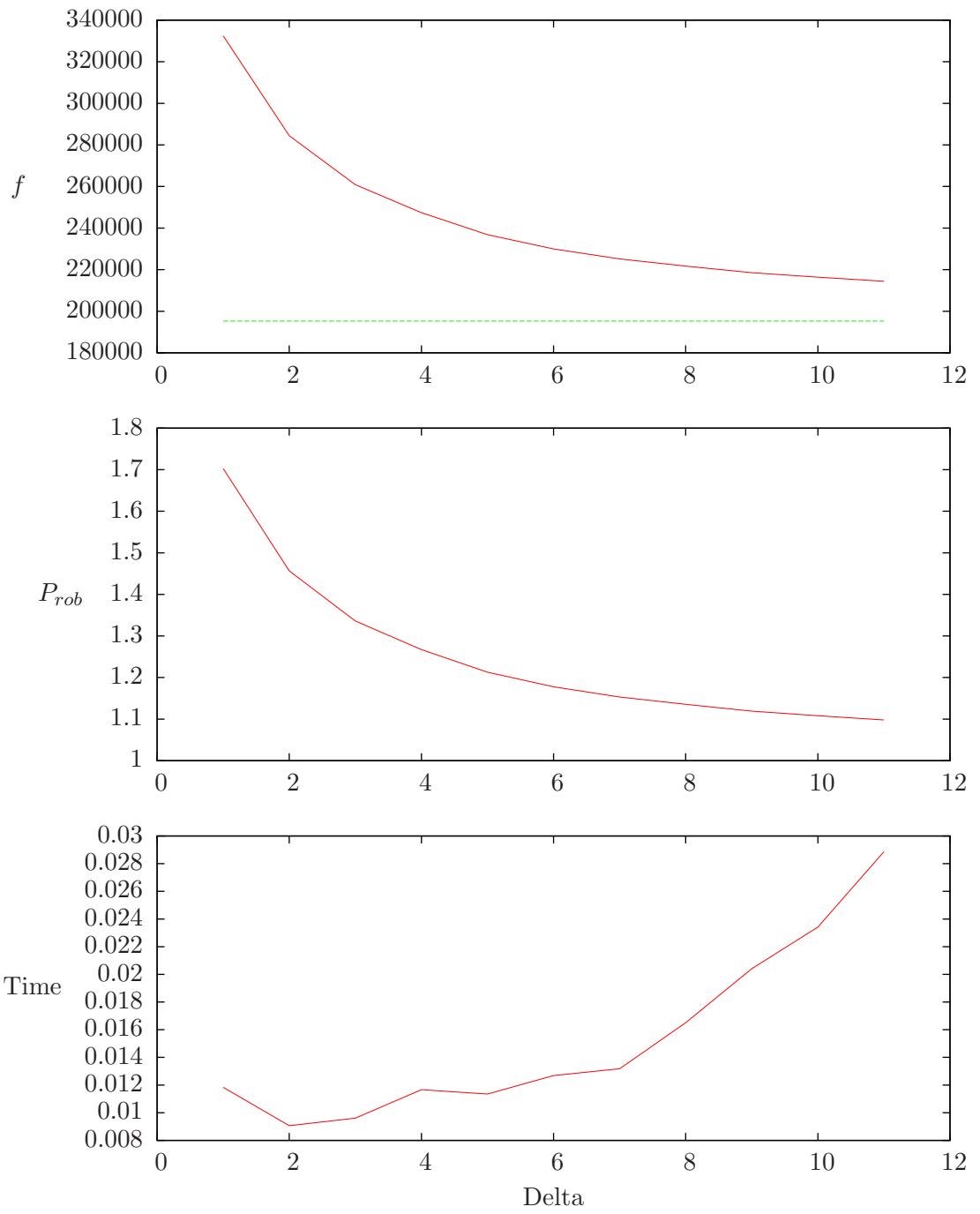
brbo.txt,  $L = avg$ ,  $\alpha = 9$



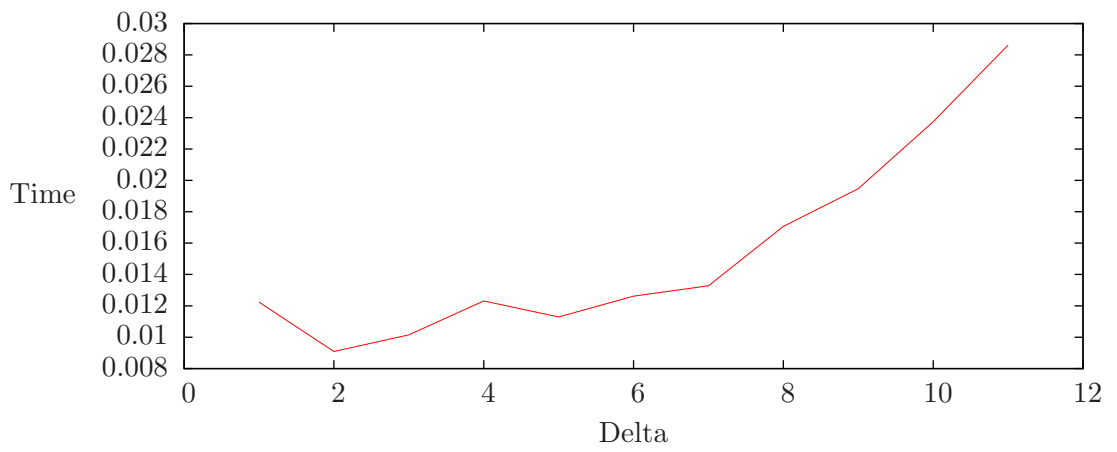
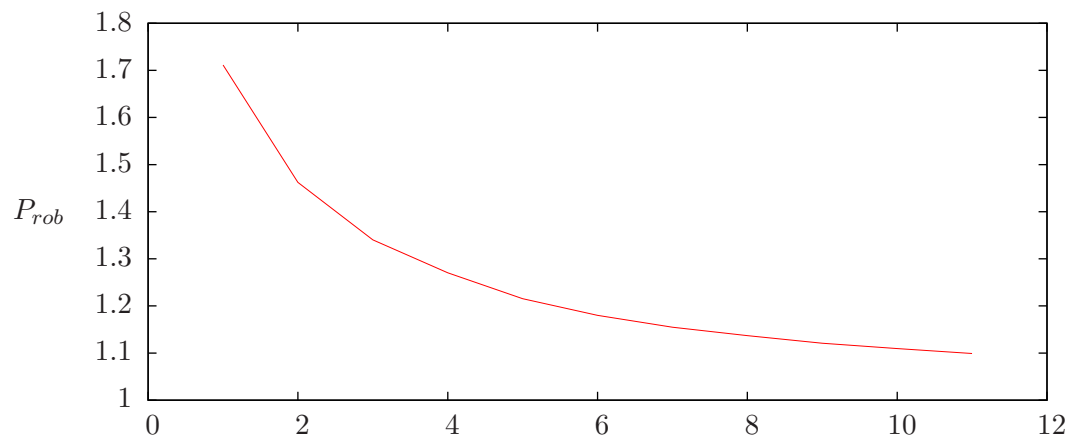
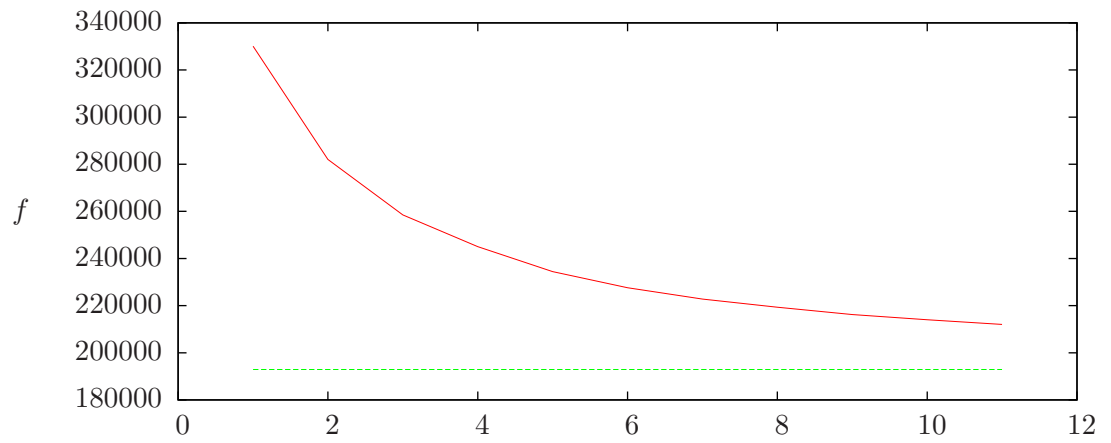
brbo.txt, real  $L$ ,  $\alpha = 9$



brbo.txt,  $L = avg$ ,  $\alpha = 13$

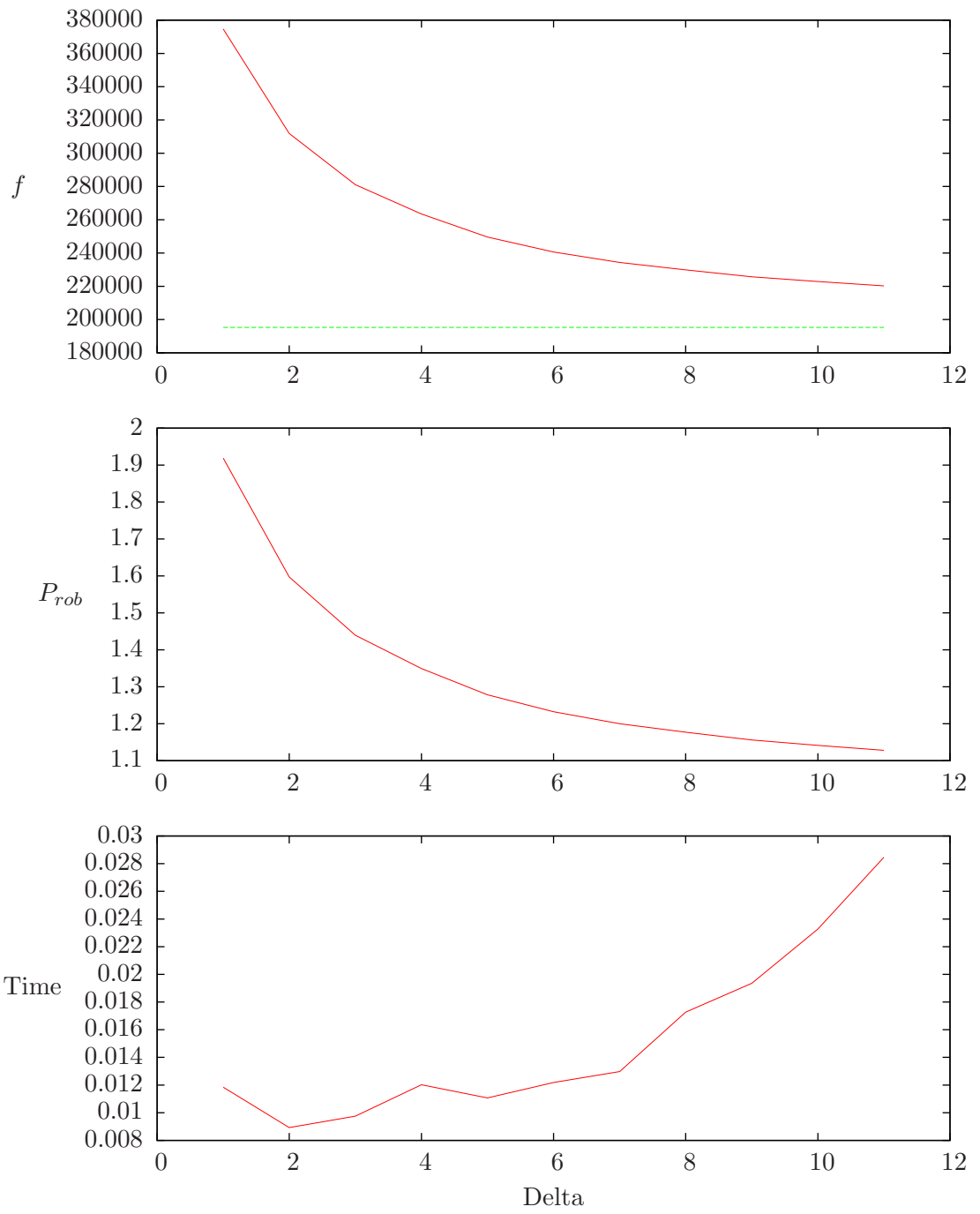


brbo.txt, real  $L$ ,  $\alpha = 13$

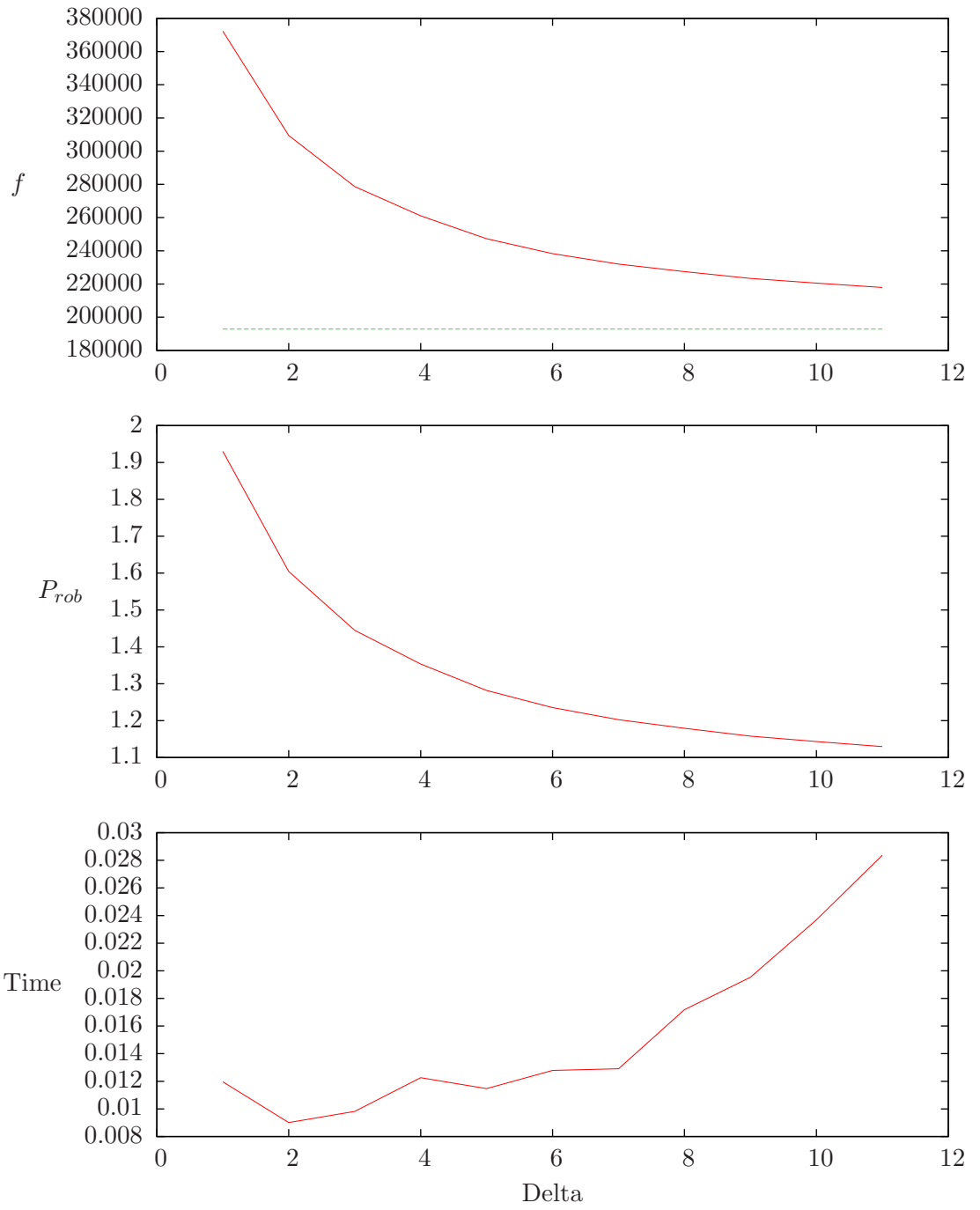


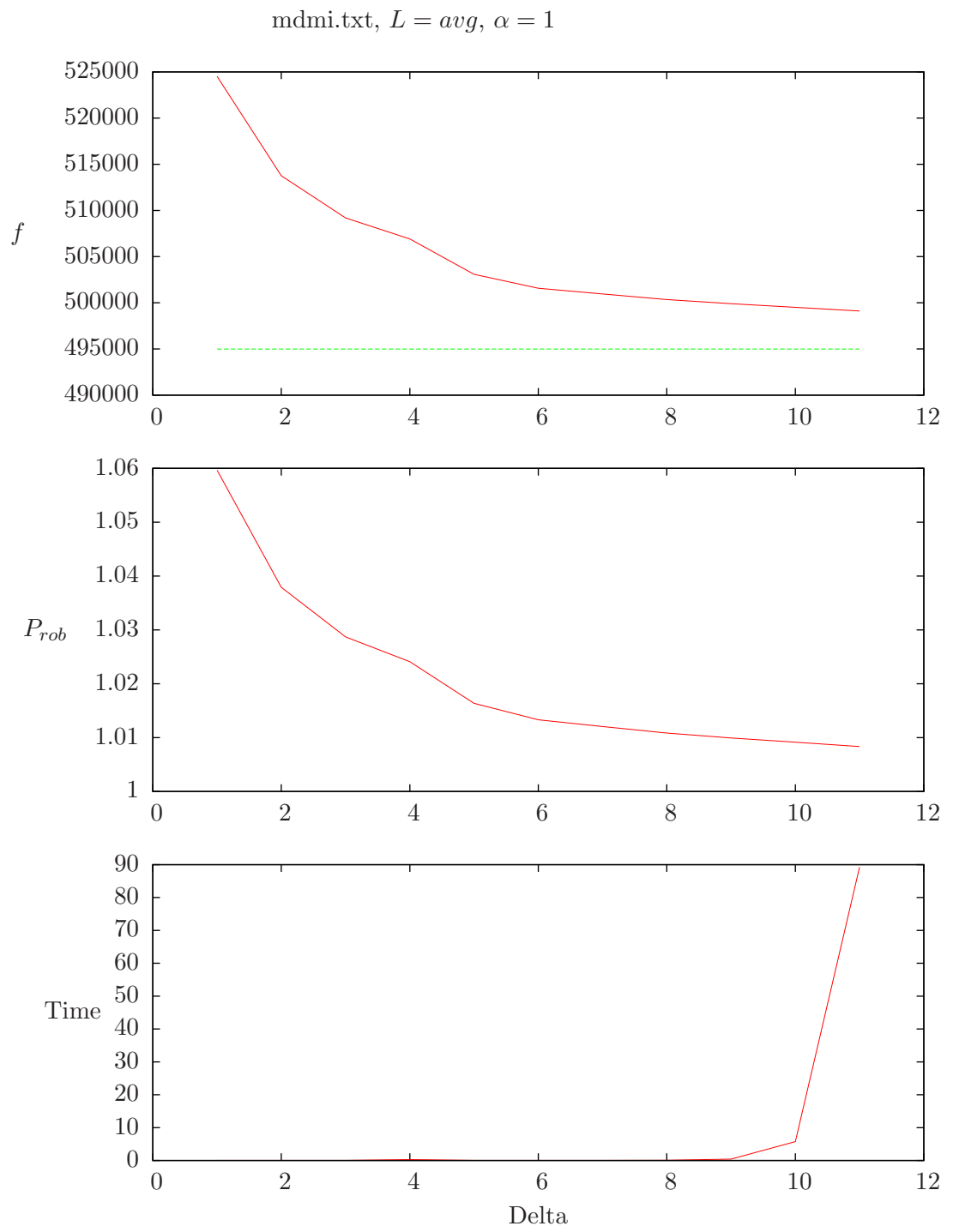


brbo.txt,  $L = avg$ ,  $\alpha = 17$

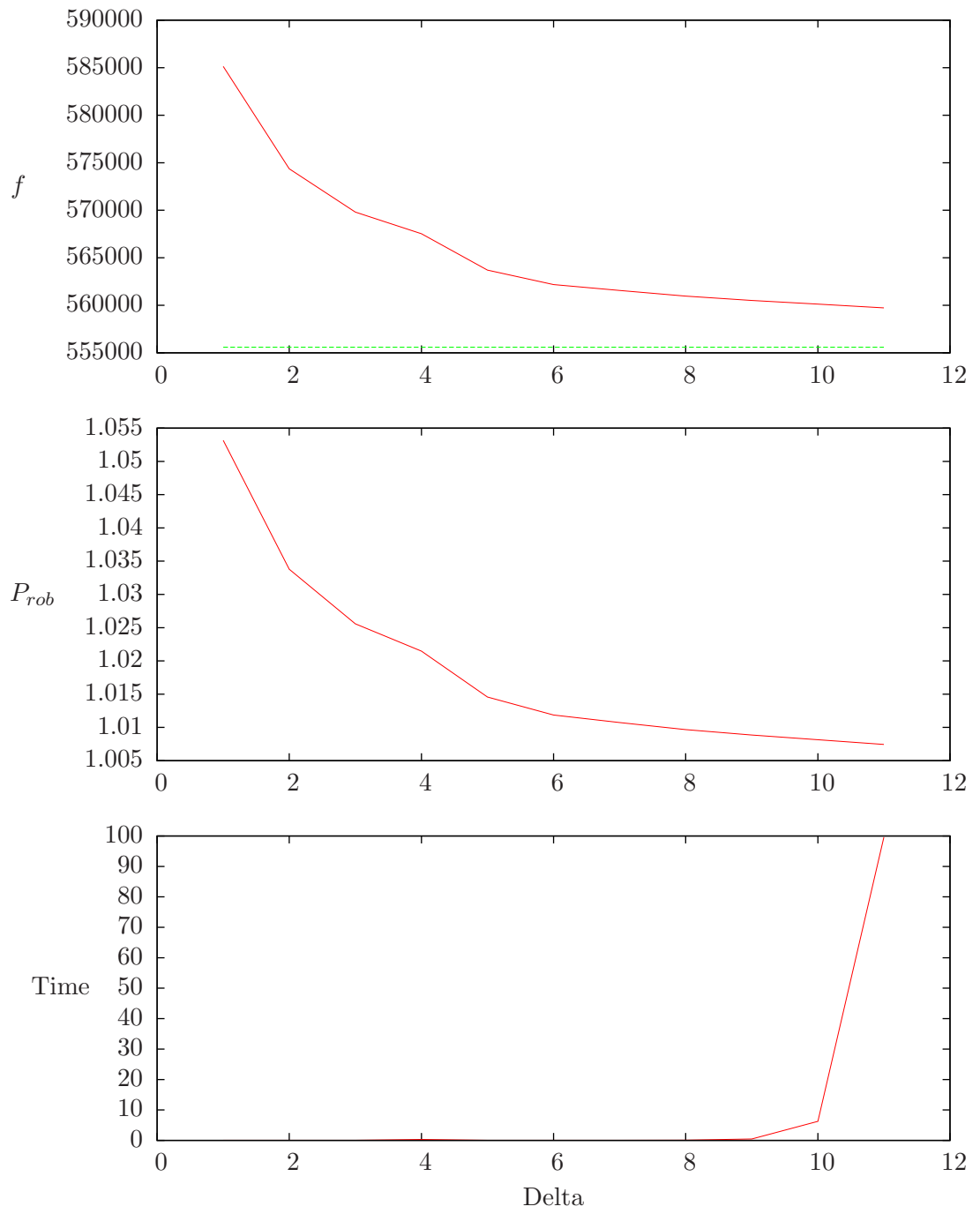


brbo.txt, real  $L$ ,  $\alpha = 17$

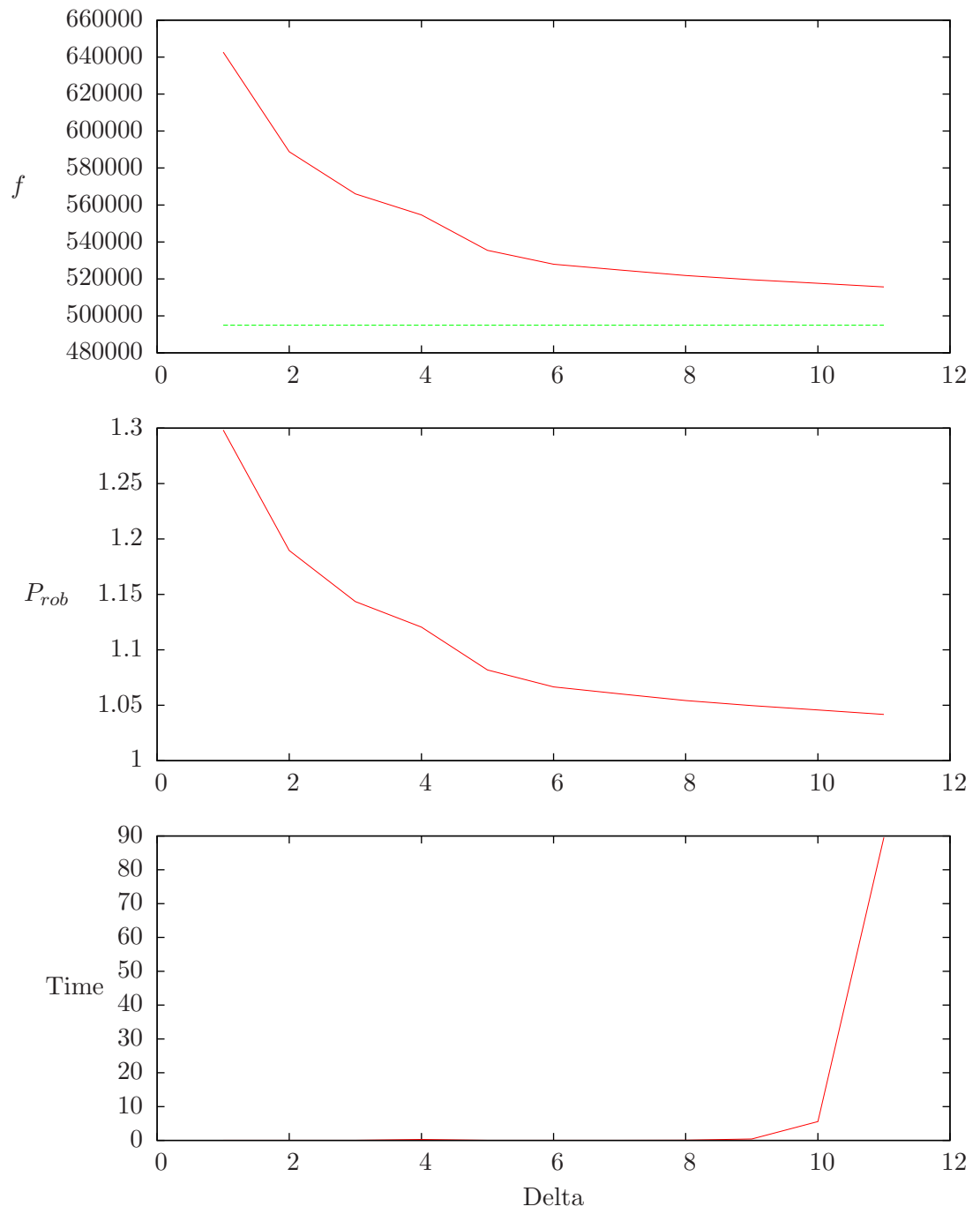




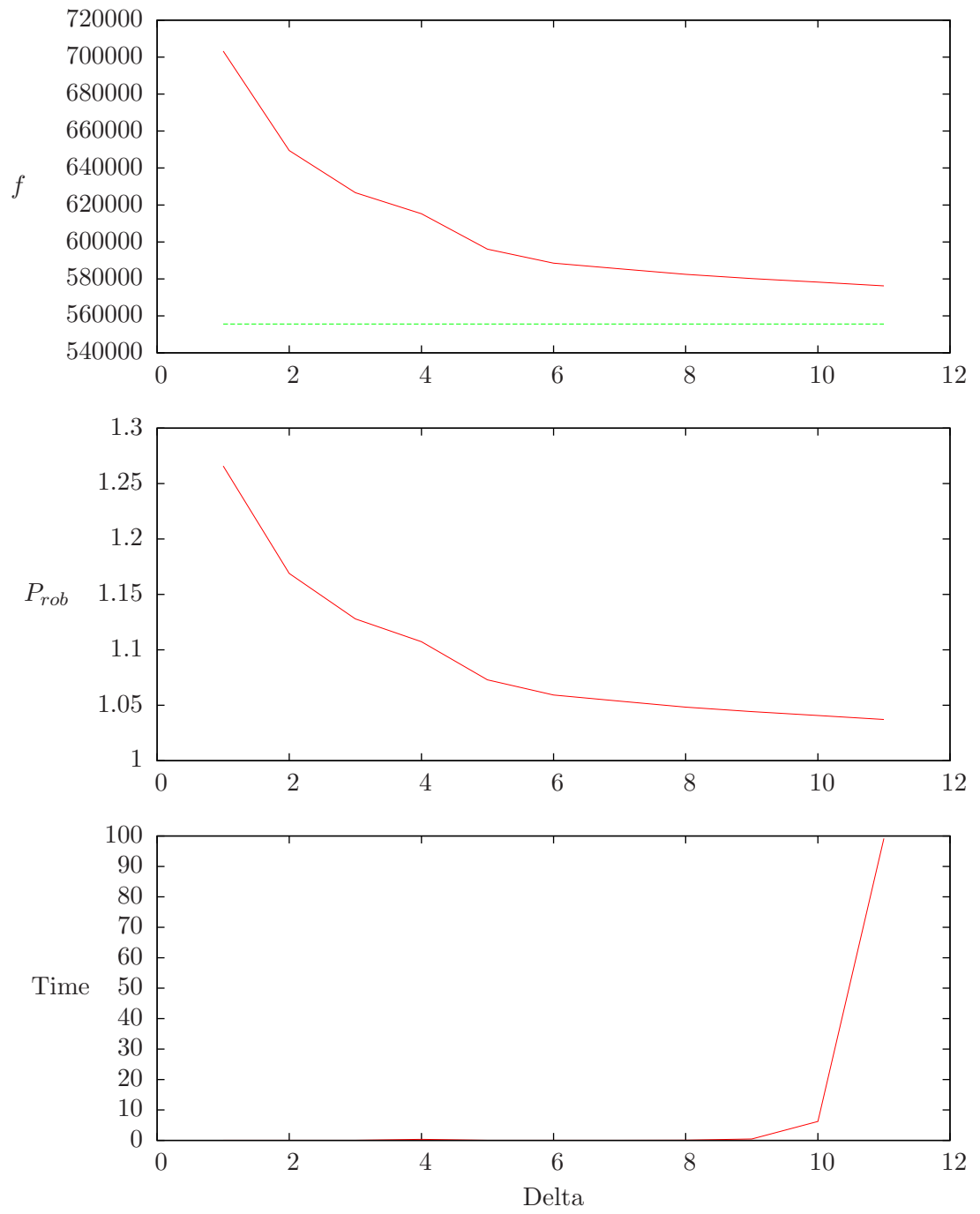
mdmi.txt, real  $L$ ,  $\alpha = 1$



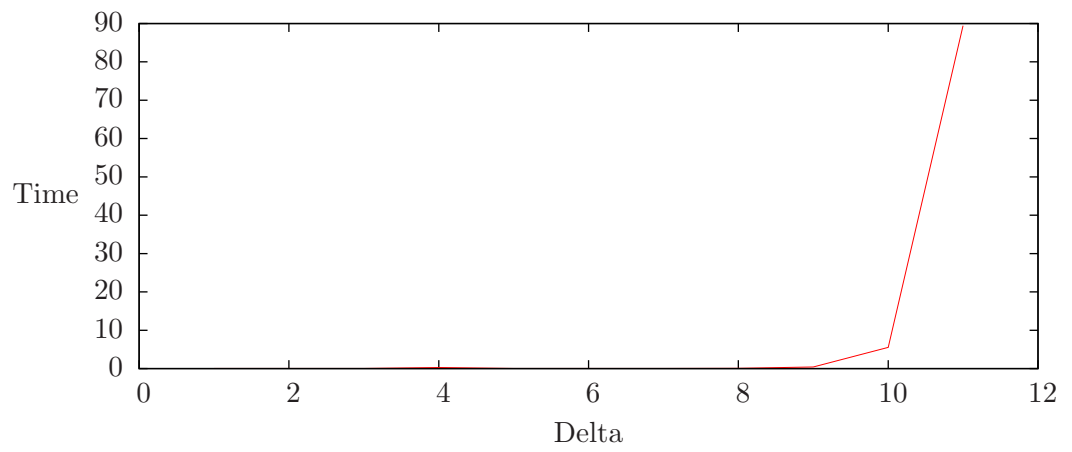
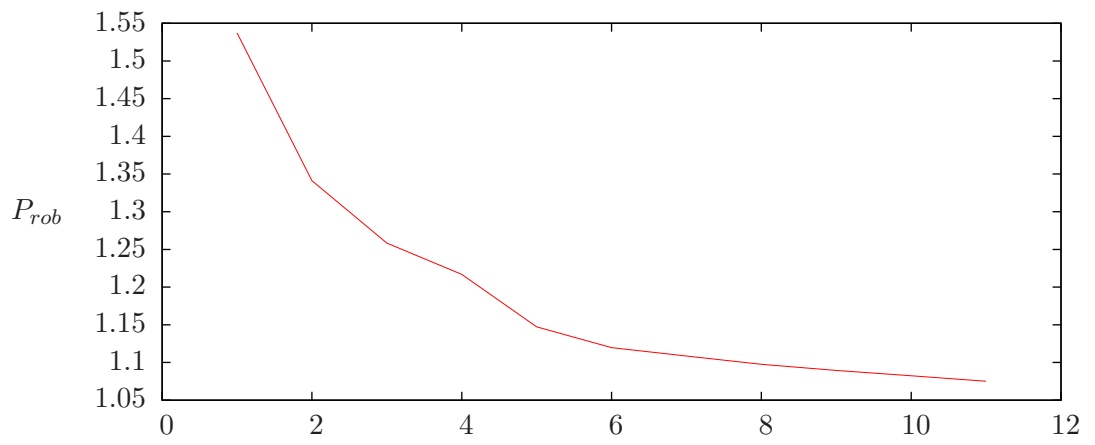
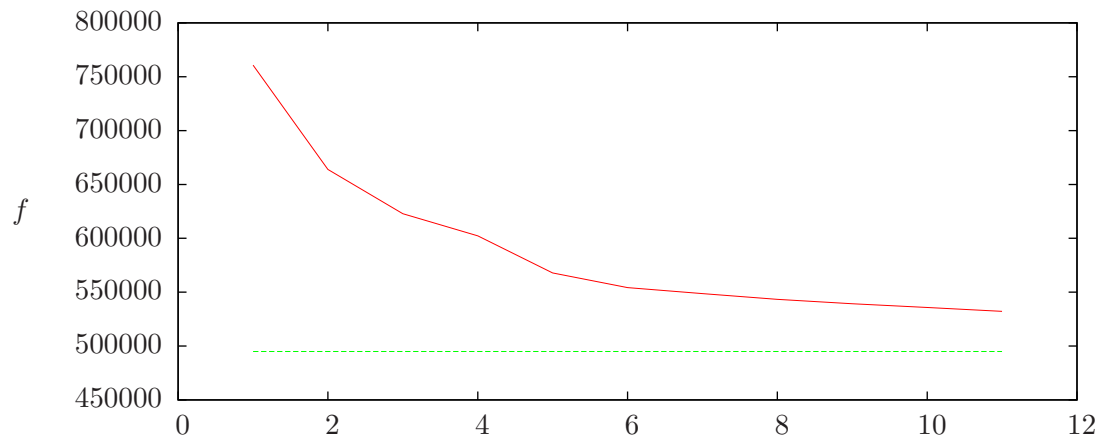
mdmi.txt,  $L = avg$ ,  $\alpha = 5$



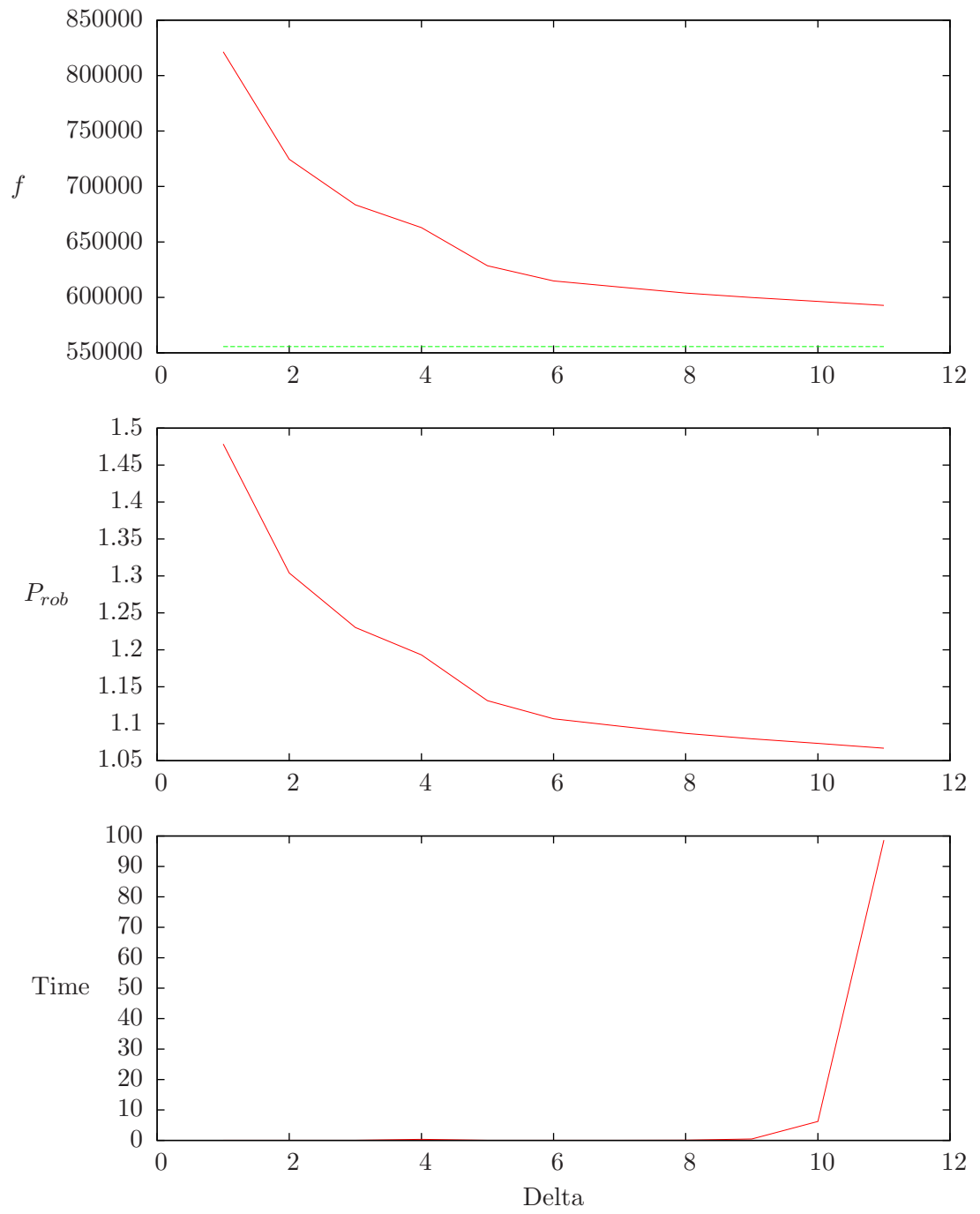
mdmi.txt, real  $L$ ,  $\alpha = 5$



mdmi.txt,  $L = avg$ ,  $\alpha = 9$

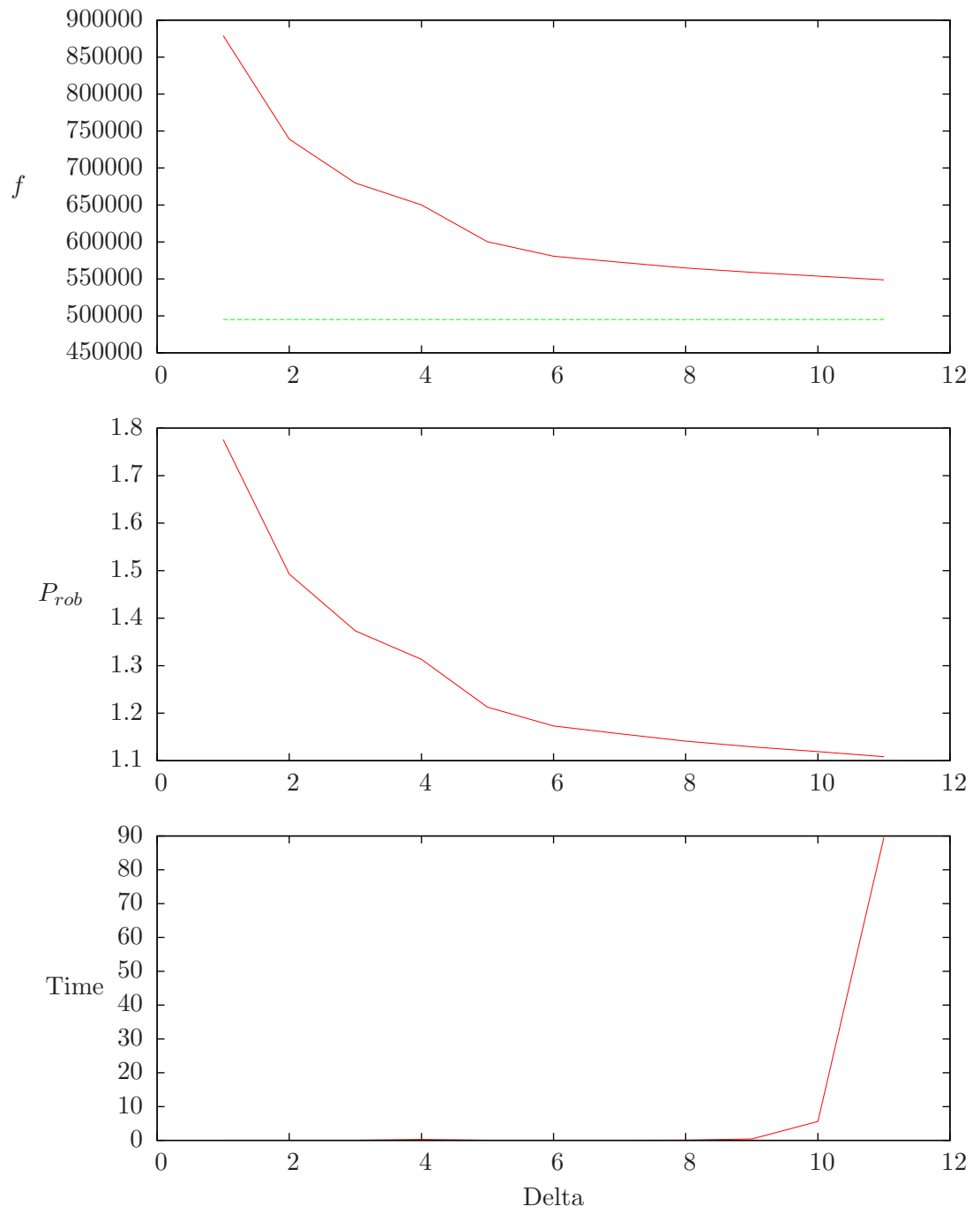


mdmi.txt, real  $L$ ,  $\alpha = 9$

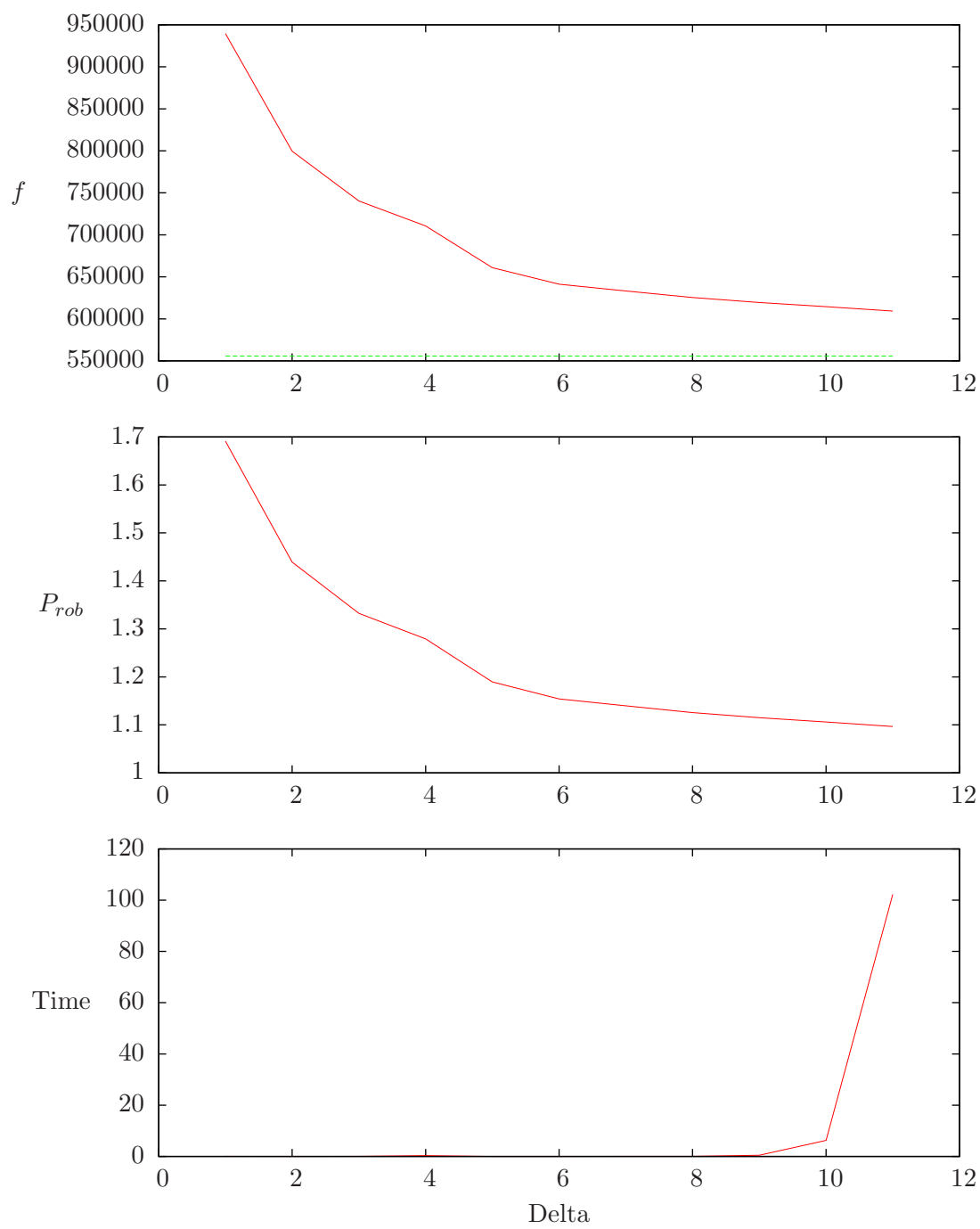




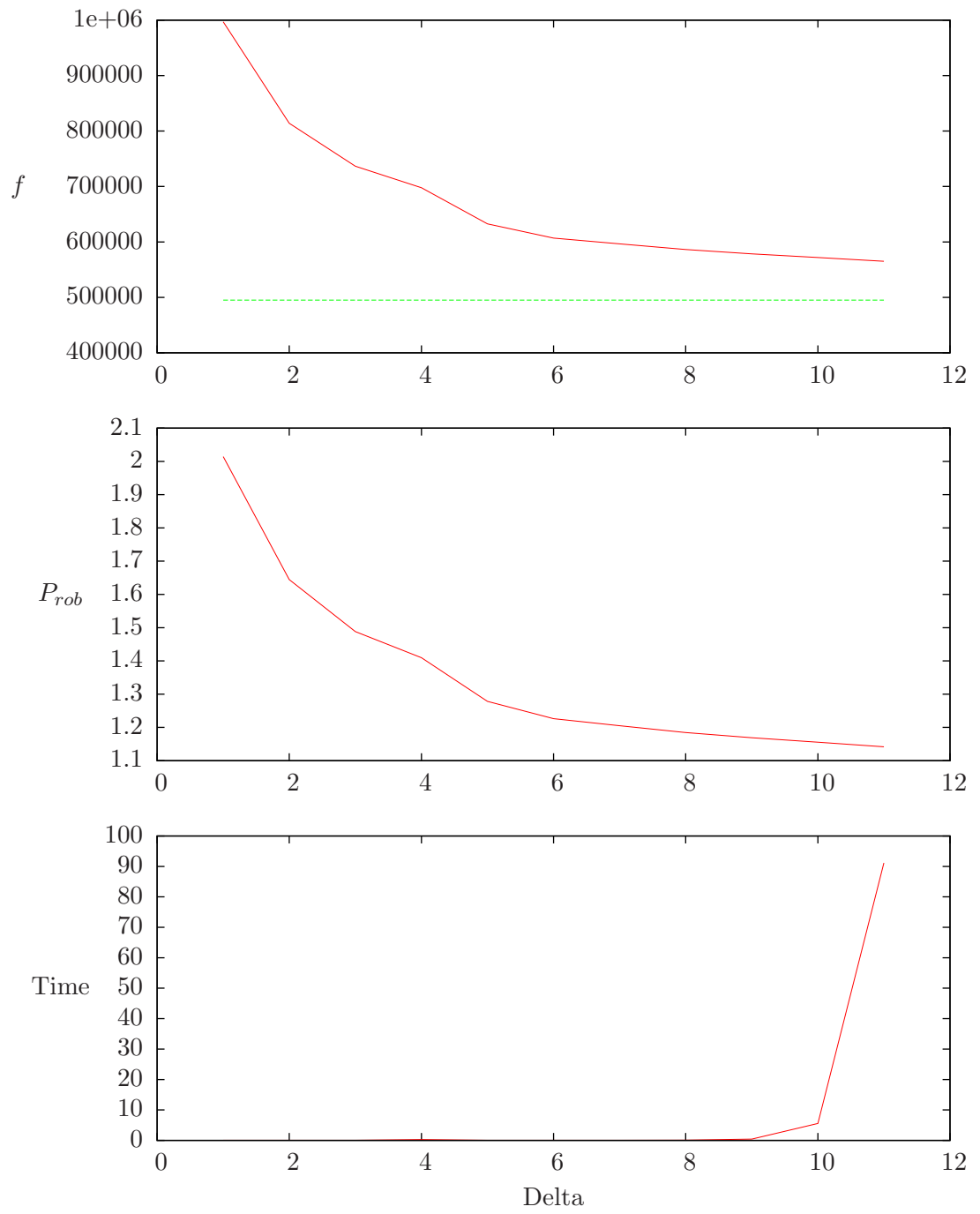
mdmi.txt,  $L = avg$ ,  $\alpha = 13$



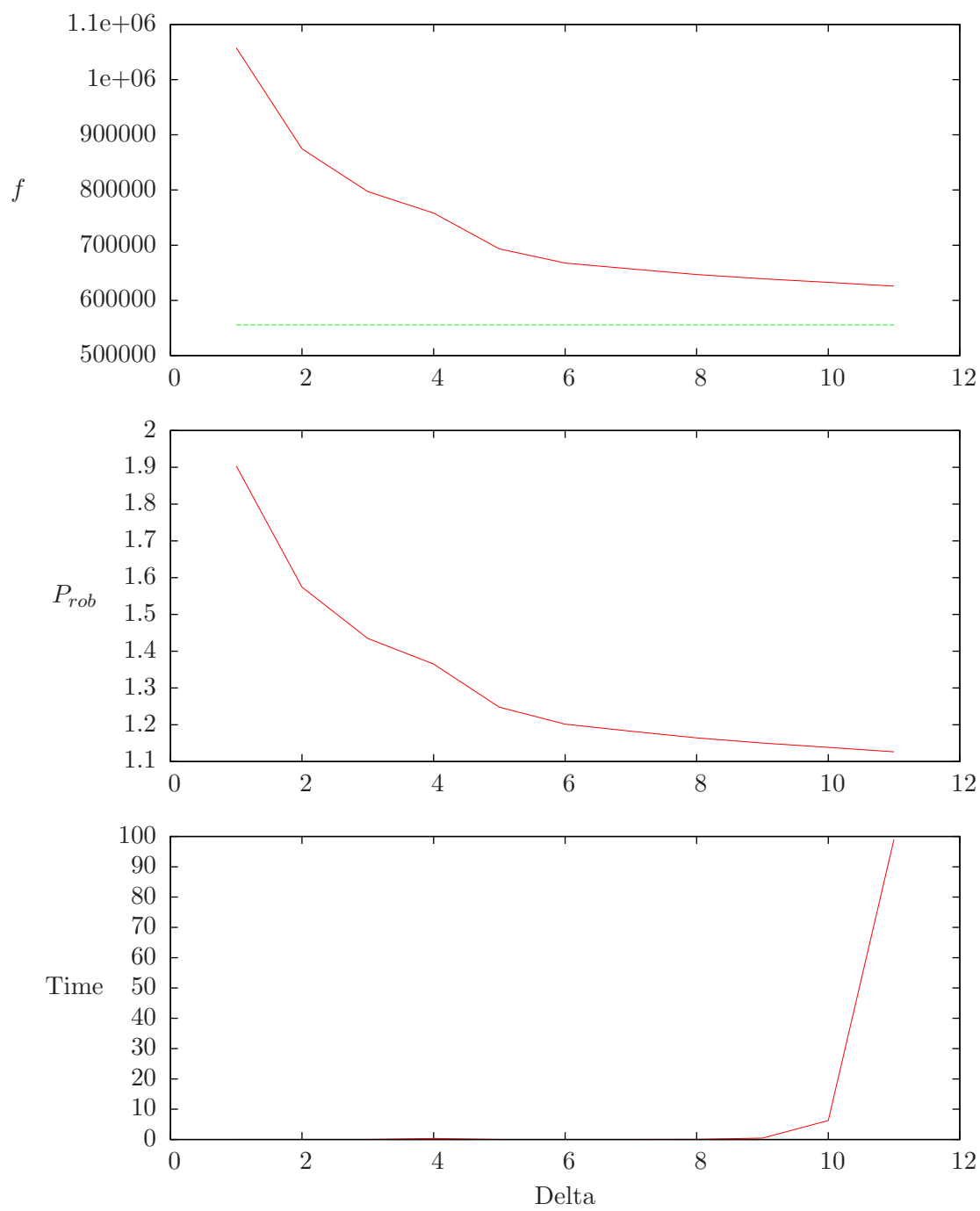
mdmi.txt, real  $L$ ,  $\alpha = 13$



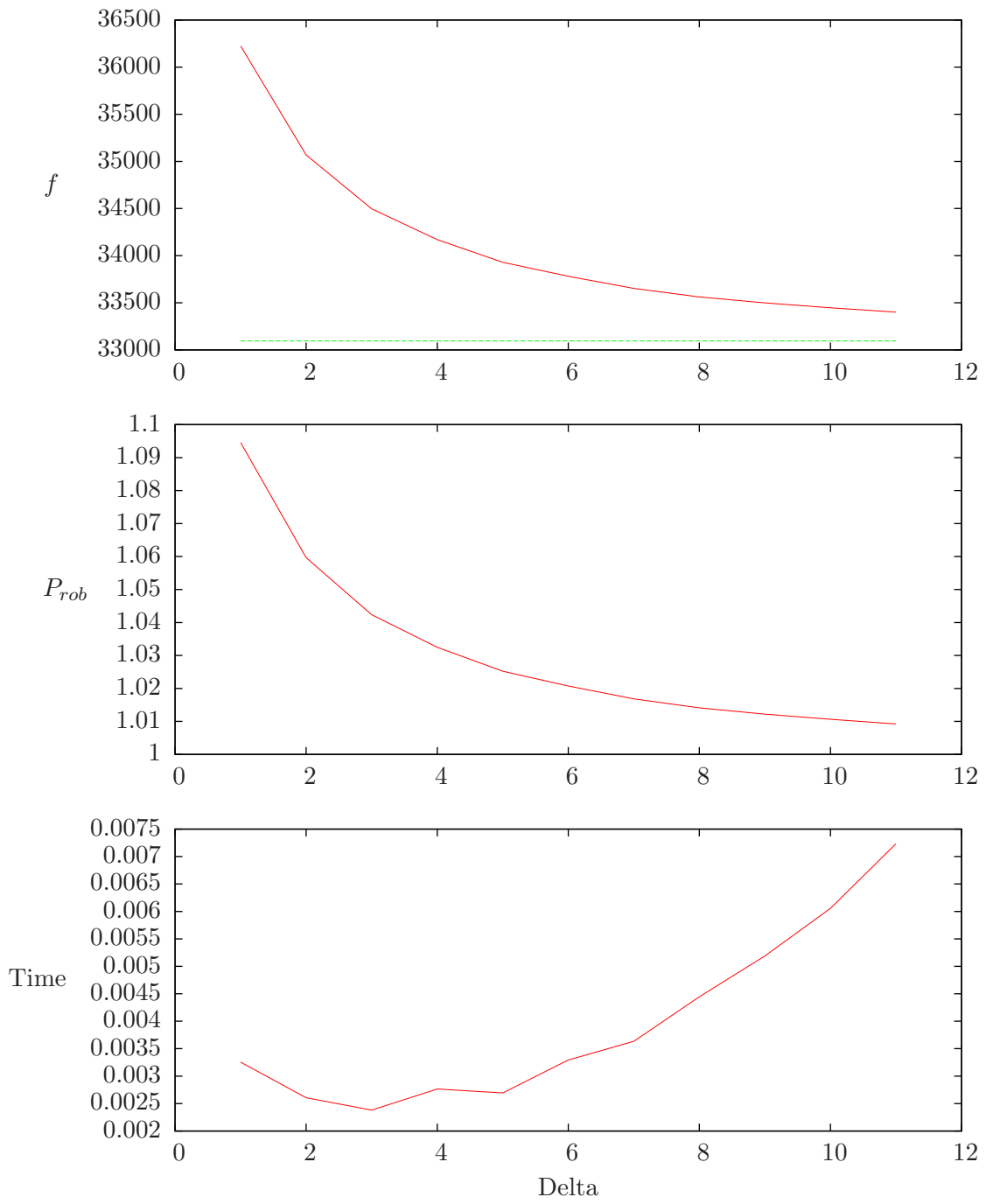
mdmi.txt,  $L = avg$ ,  $\alpha = 17$



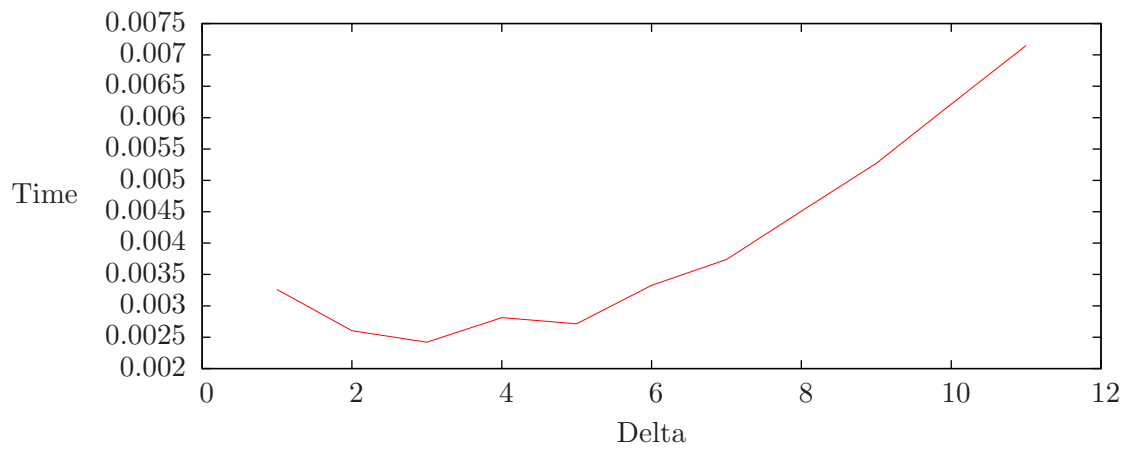
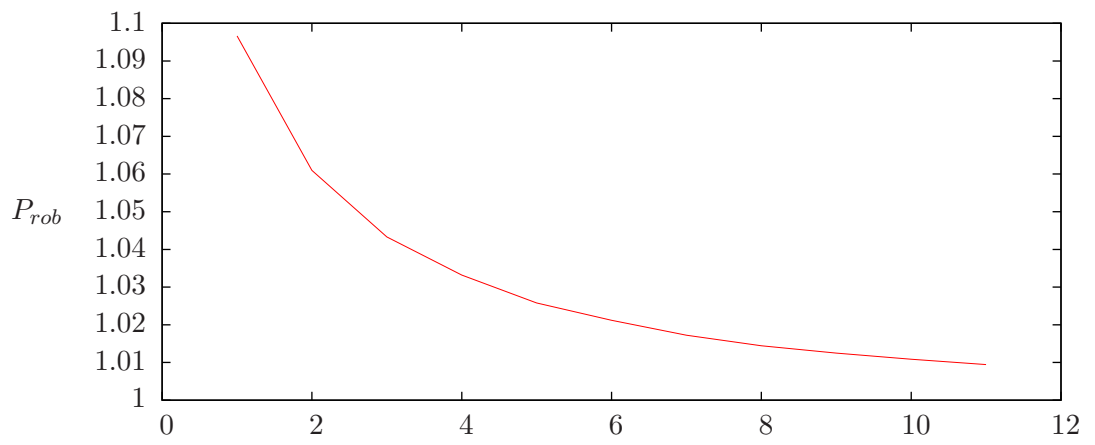
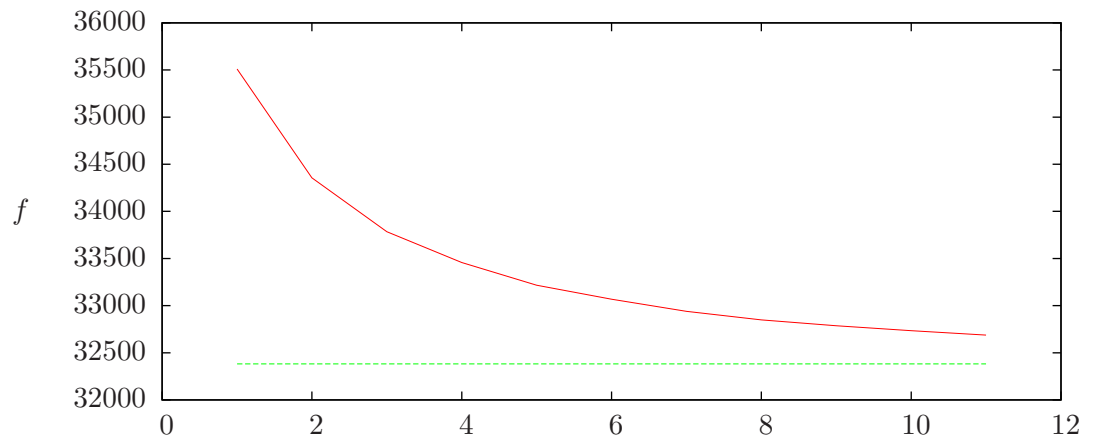
mdmi.txt, real  $L$ ,  $\alpha = 17$



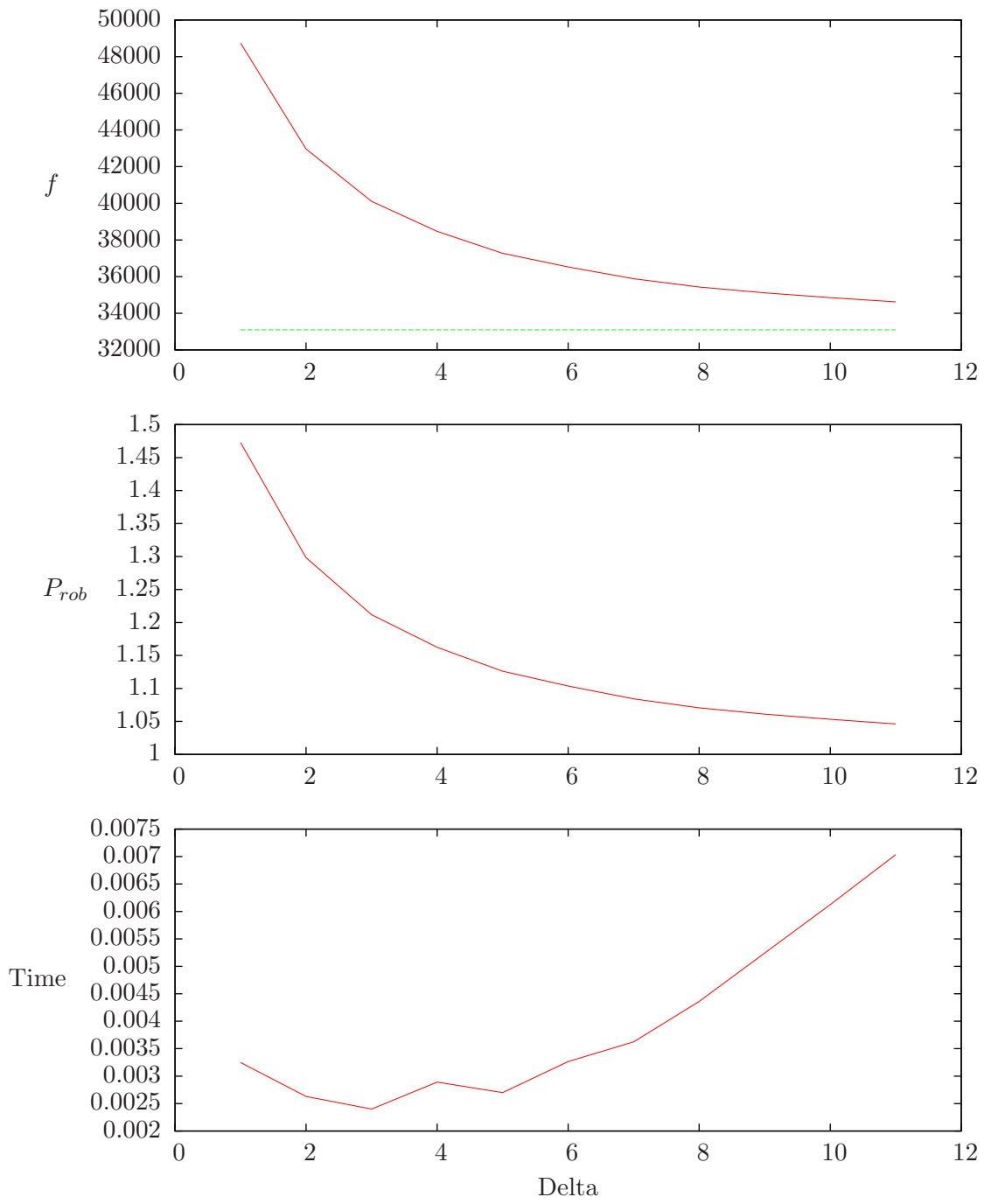
bzvr.txt,  $L = avg$ ,  $\alpha = 1$



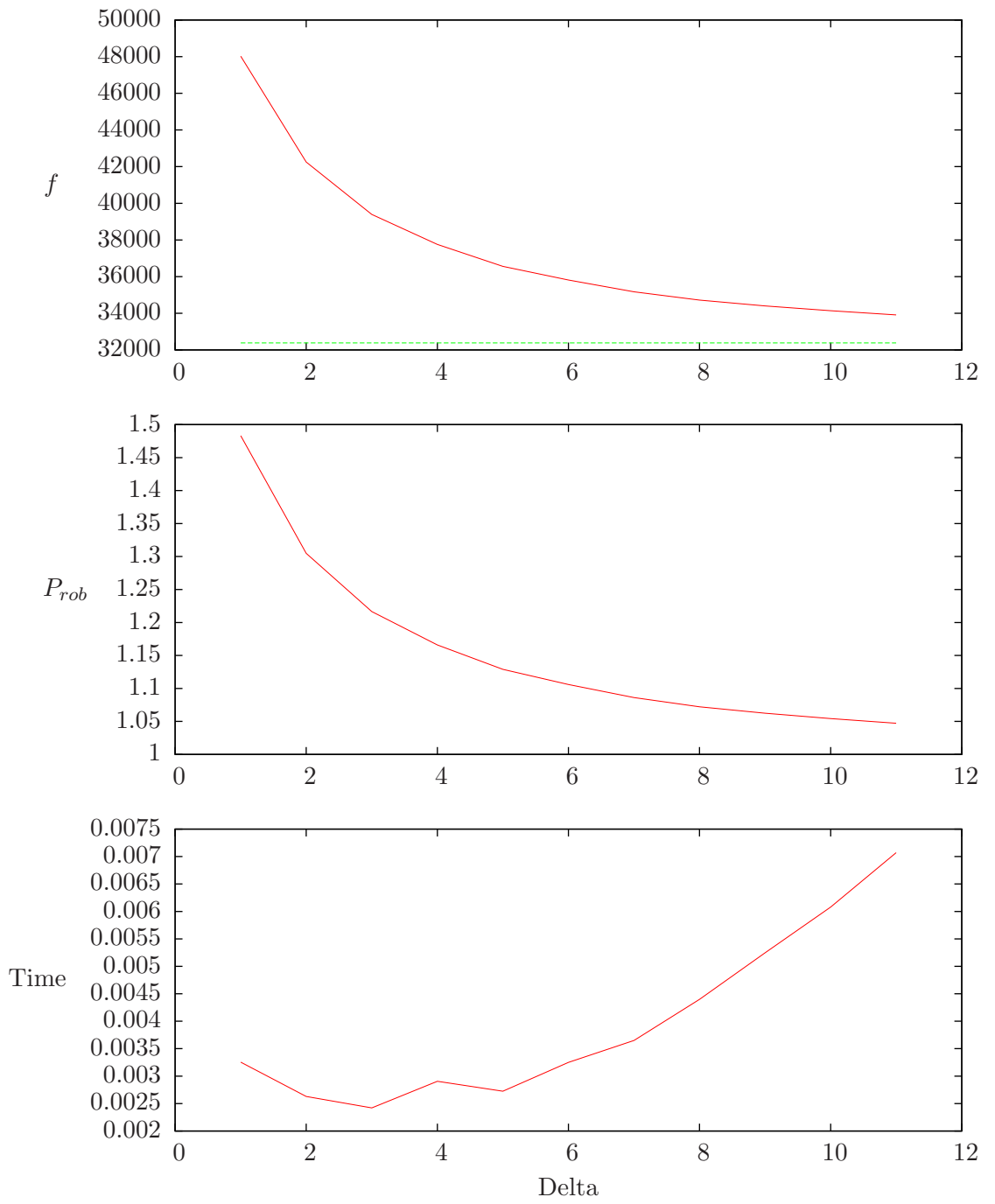
bzvr.txt, real  $L$ ,  $\alpha = 1$



bzvr.txt,  $L = avg$ ,  $\alpha = 5$

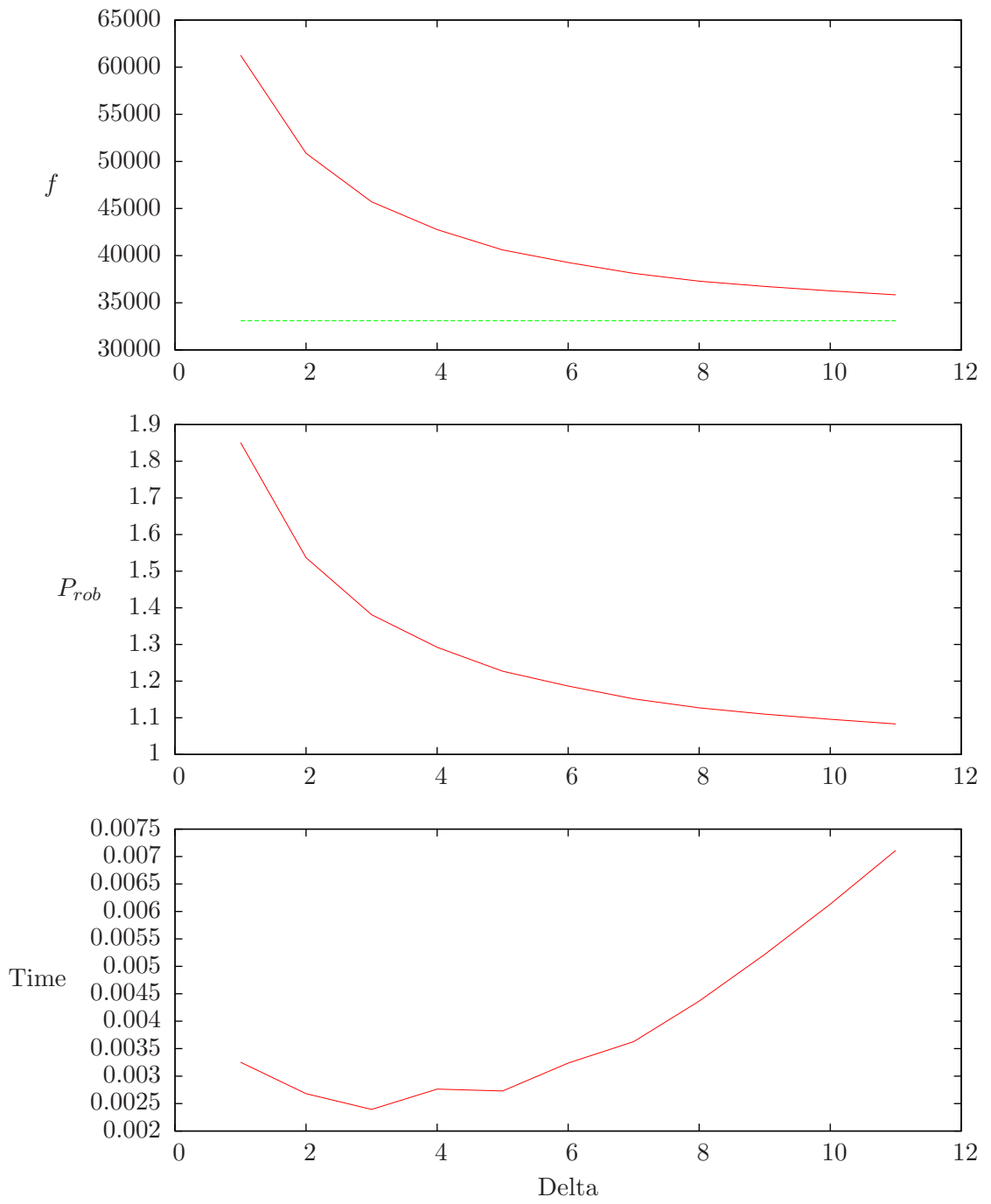


bzvr.txt, real  $L$ ,  $\alpha = 5$

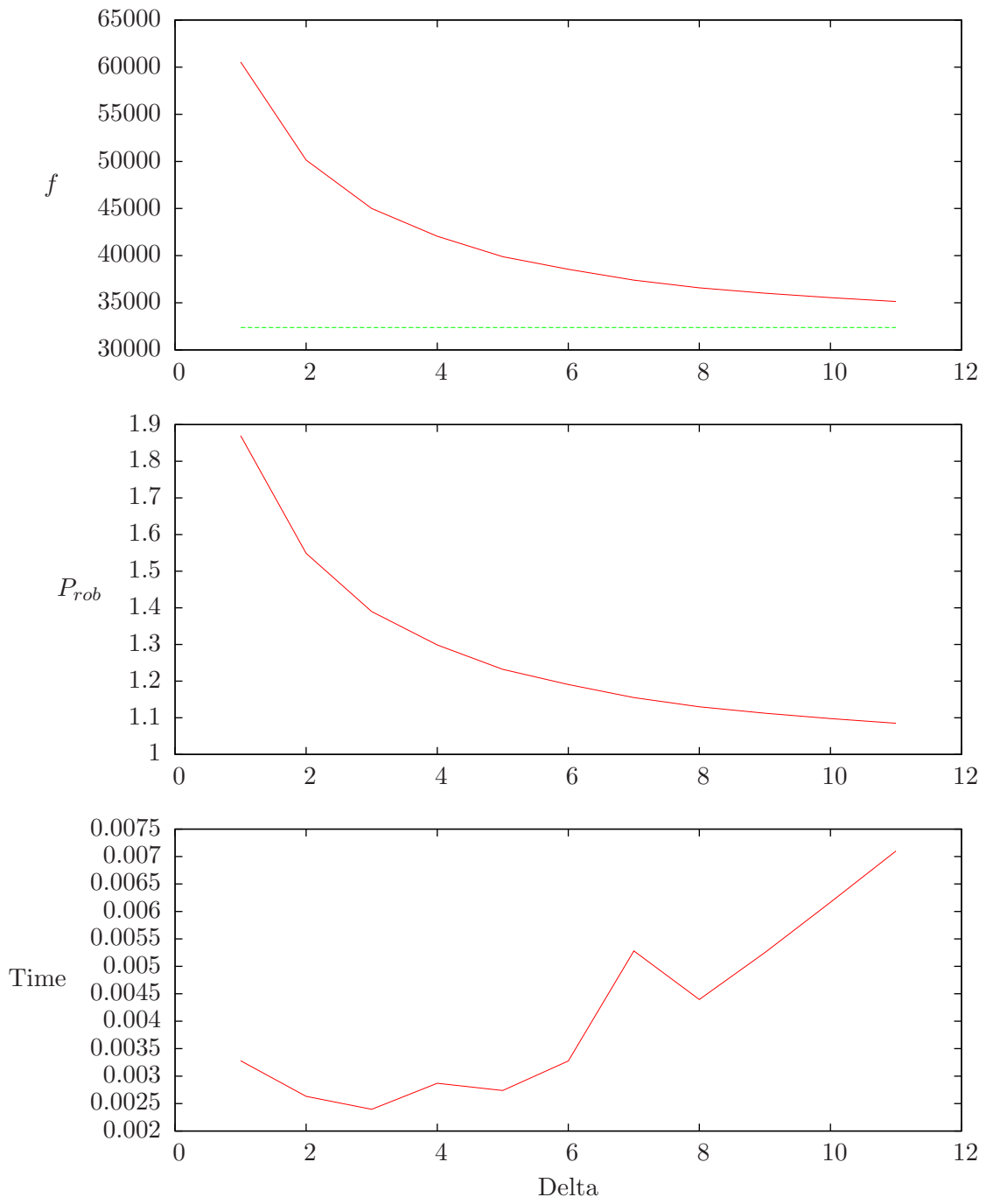




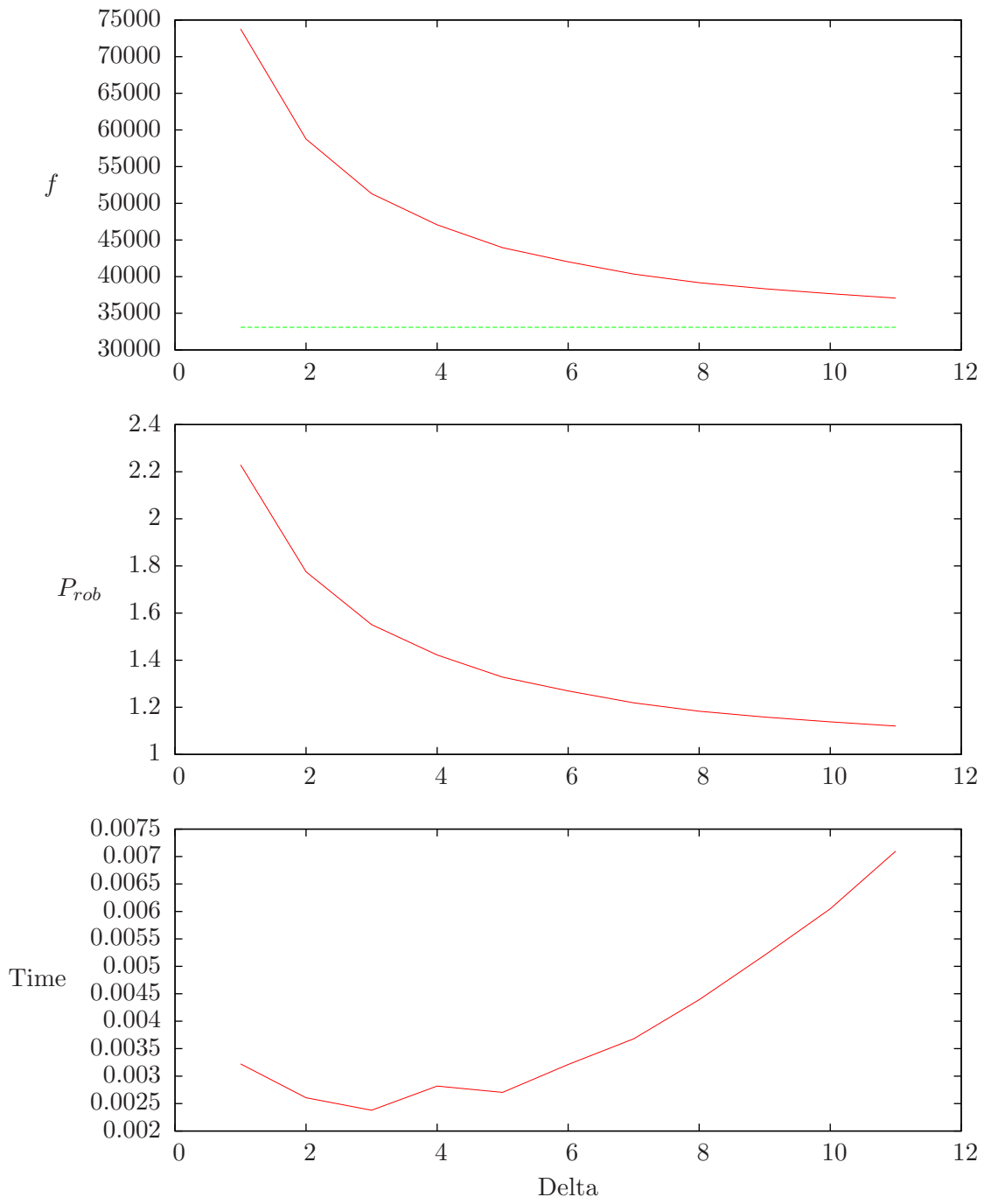
bzvr.txt,  $L = avg$ ,  $\alpha = 9$



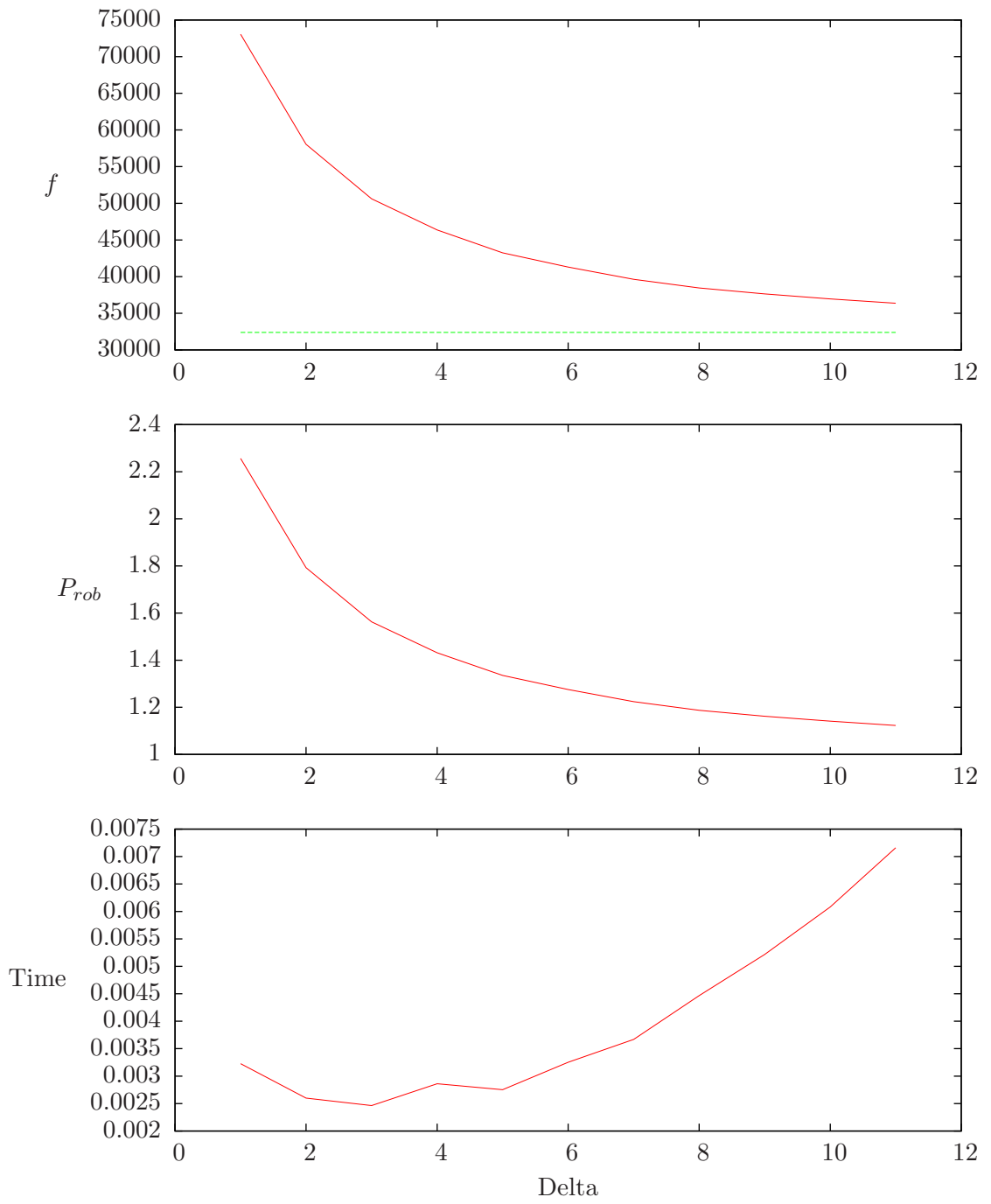
bzvr.txt, real  $L$ ,  $\alpha = 9$



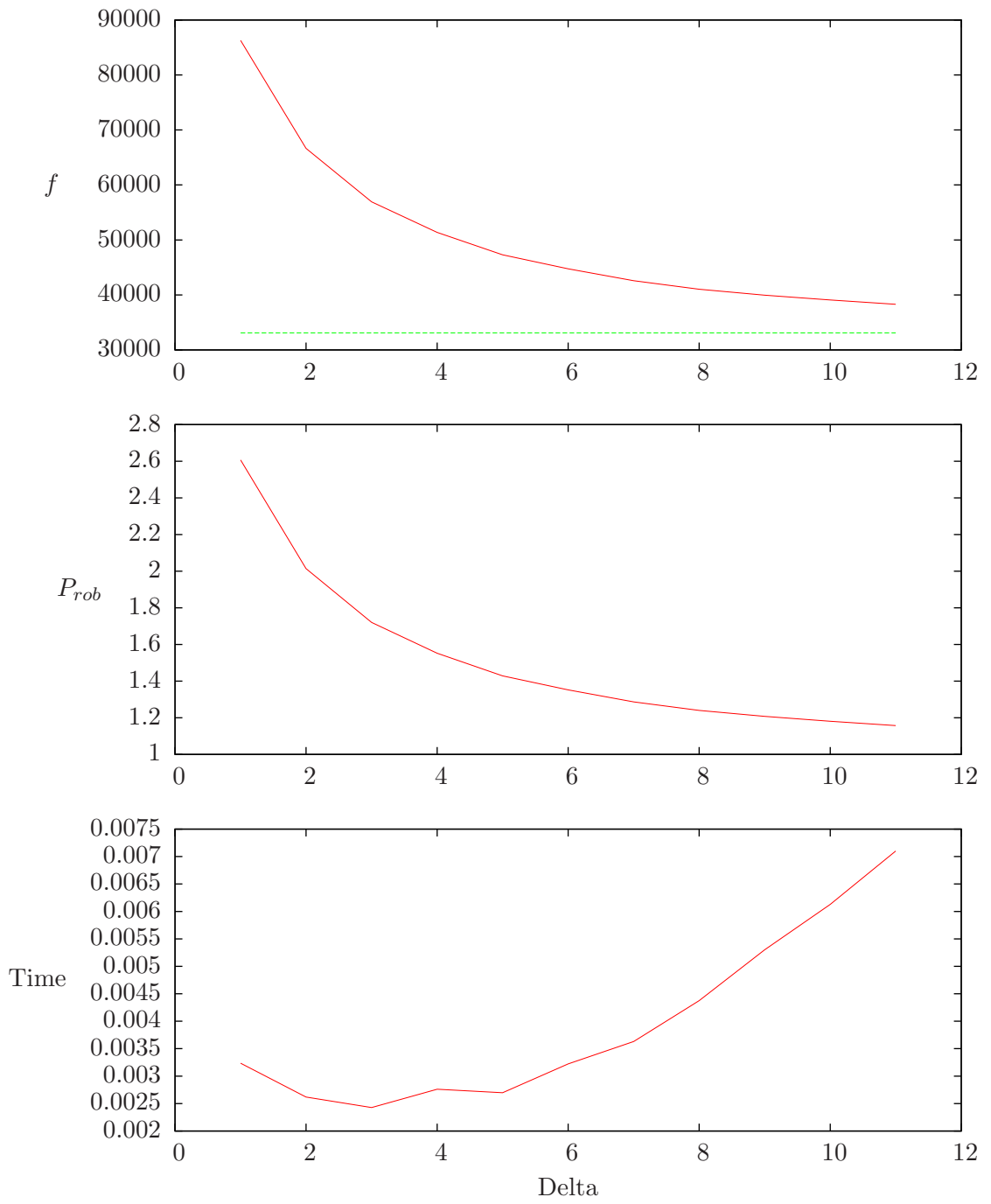
bzvr.txt,  $L = avg$ ,  $\alpha = 13$



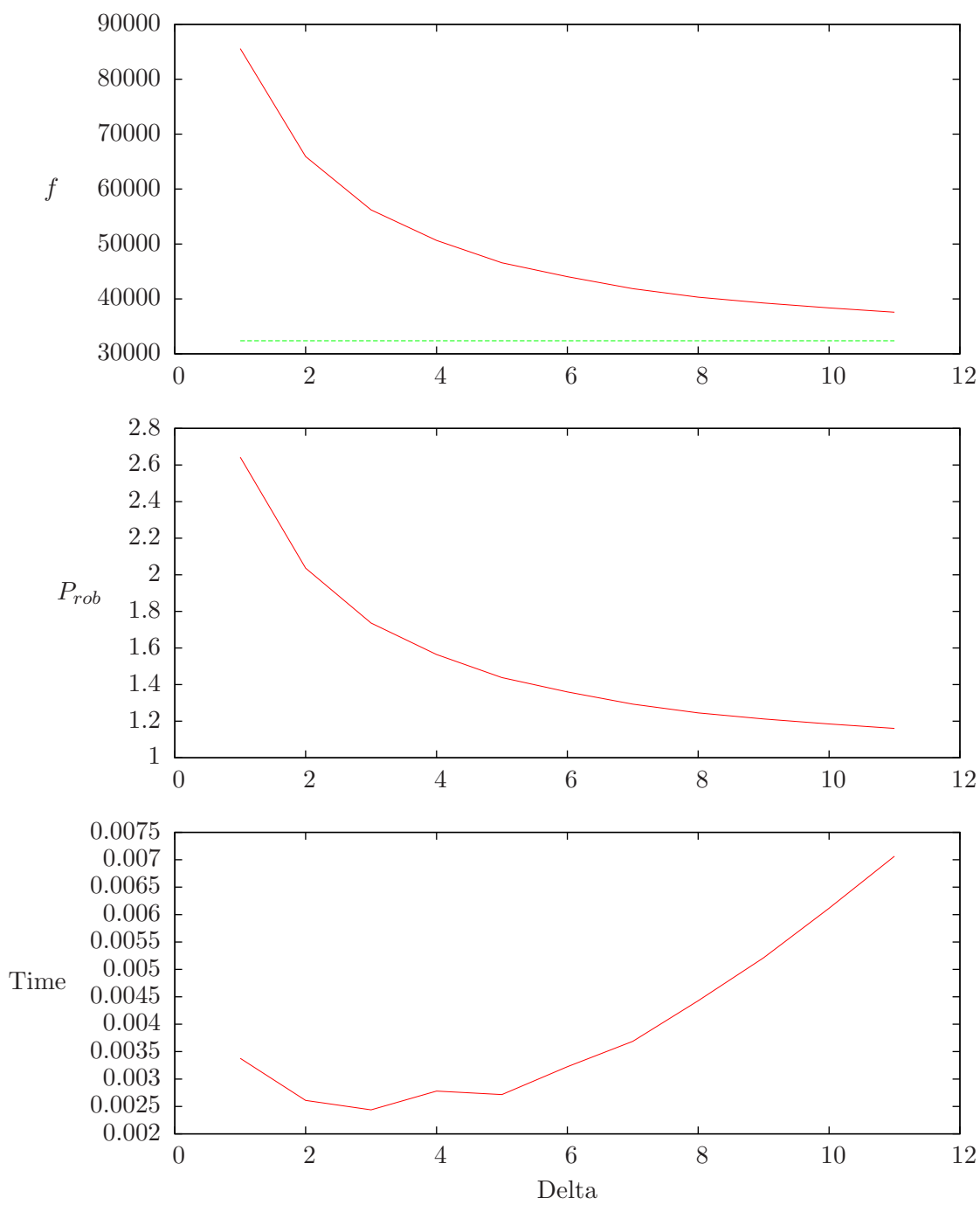
bzvr.txt, real  $L$ ,  $\alpha = 13$



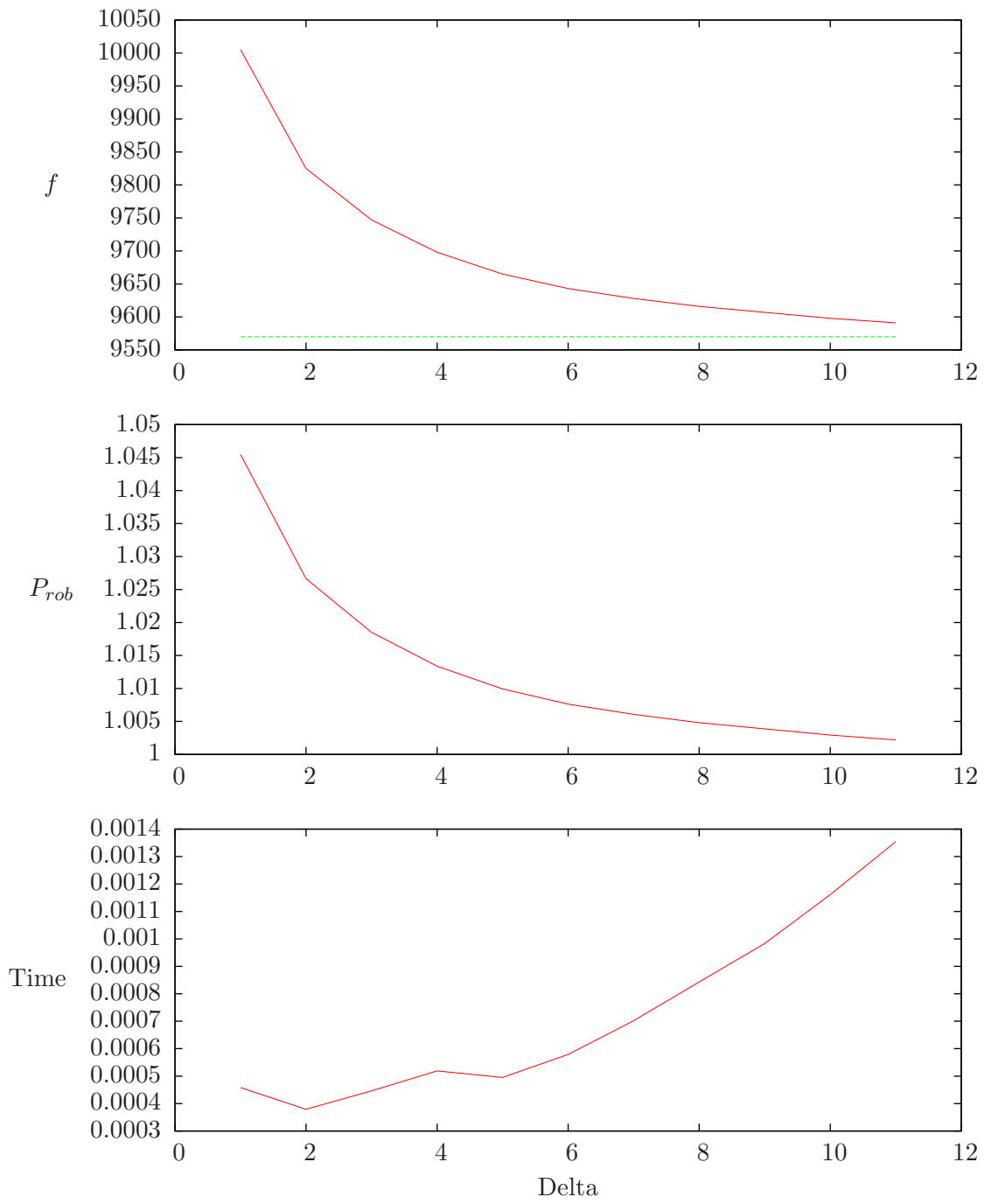
bzvr.txt,  $L = avg$ ,  $\alpha = 17$



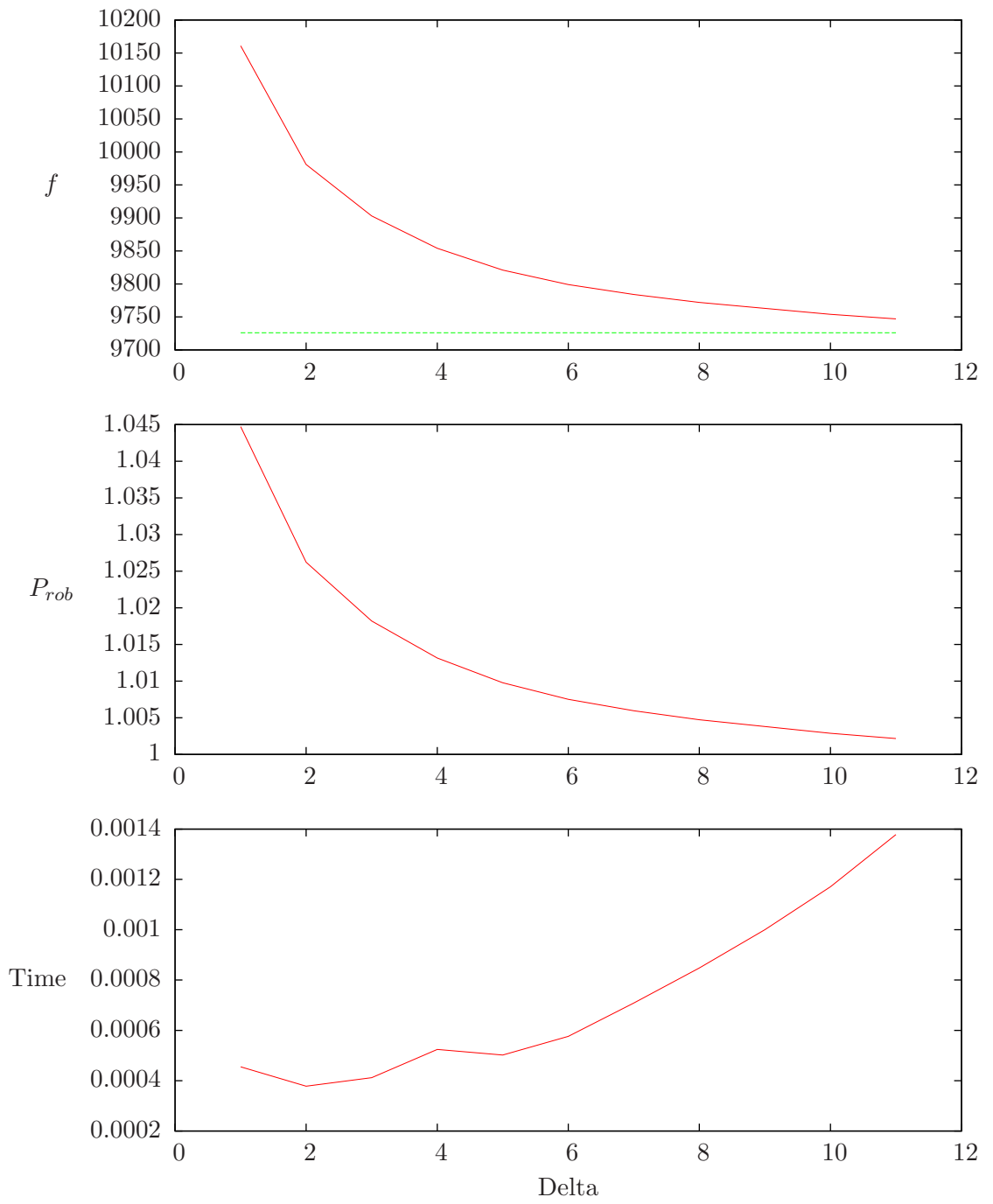
bzvr.txt, real  $L$ ,  $\alpha = 17$



pdbo.txt,  $L = avg$ ,  $\alpha = 1$

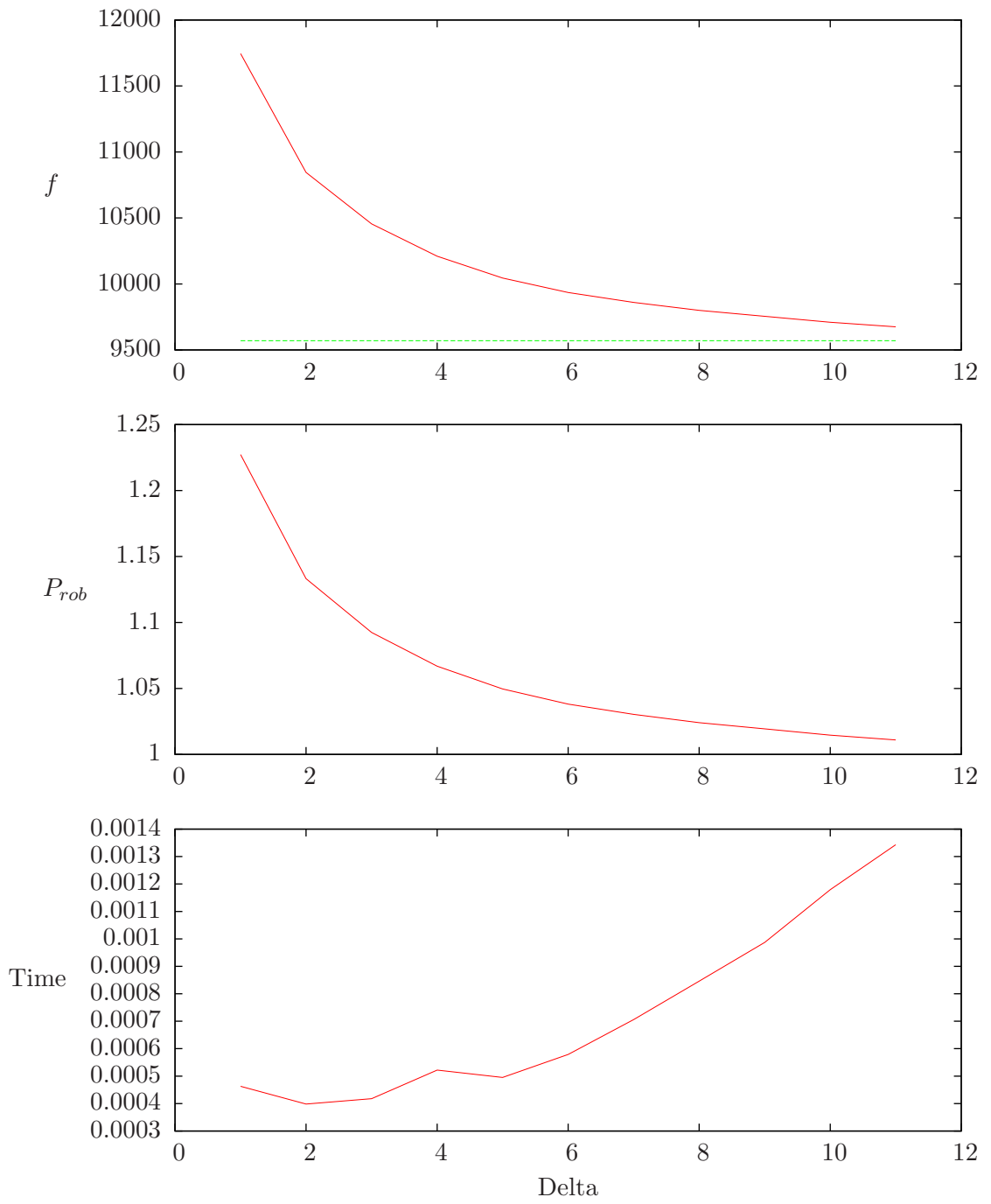


pdbo.txt, real  $L$ ,  $\alpha = 1$

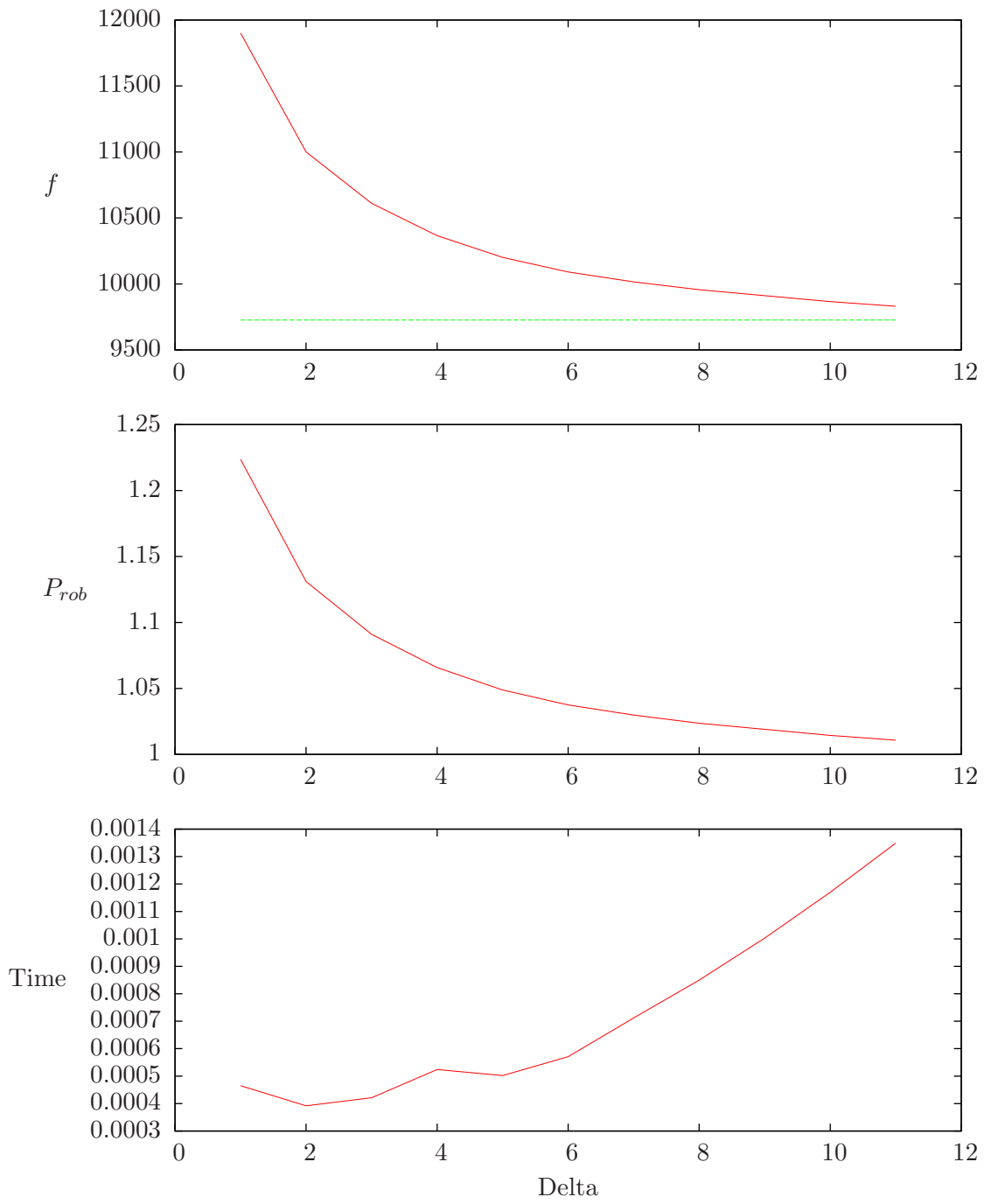




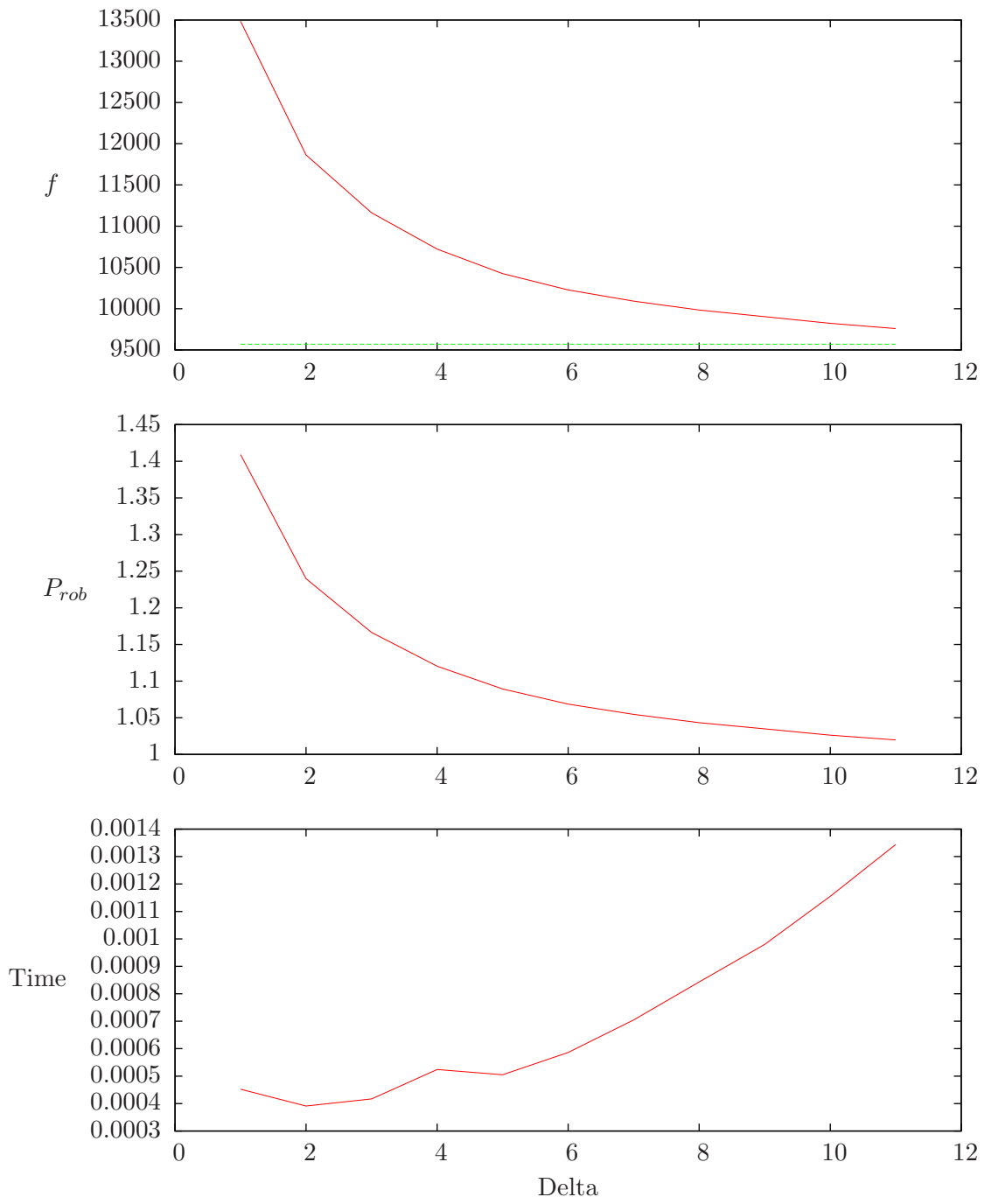
pdbo.txt,  $L = avg$ ,  $\alpha = 5$



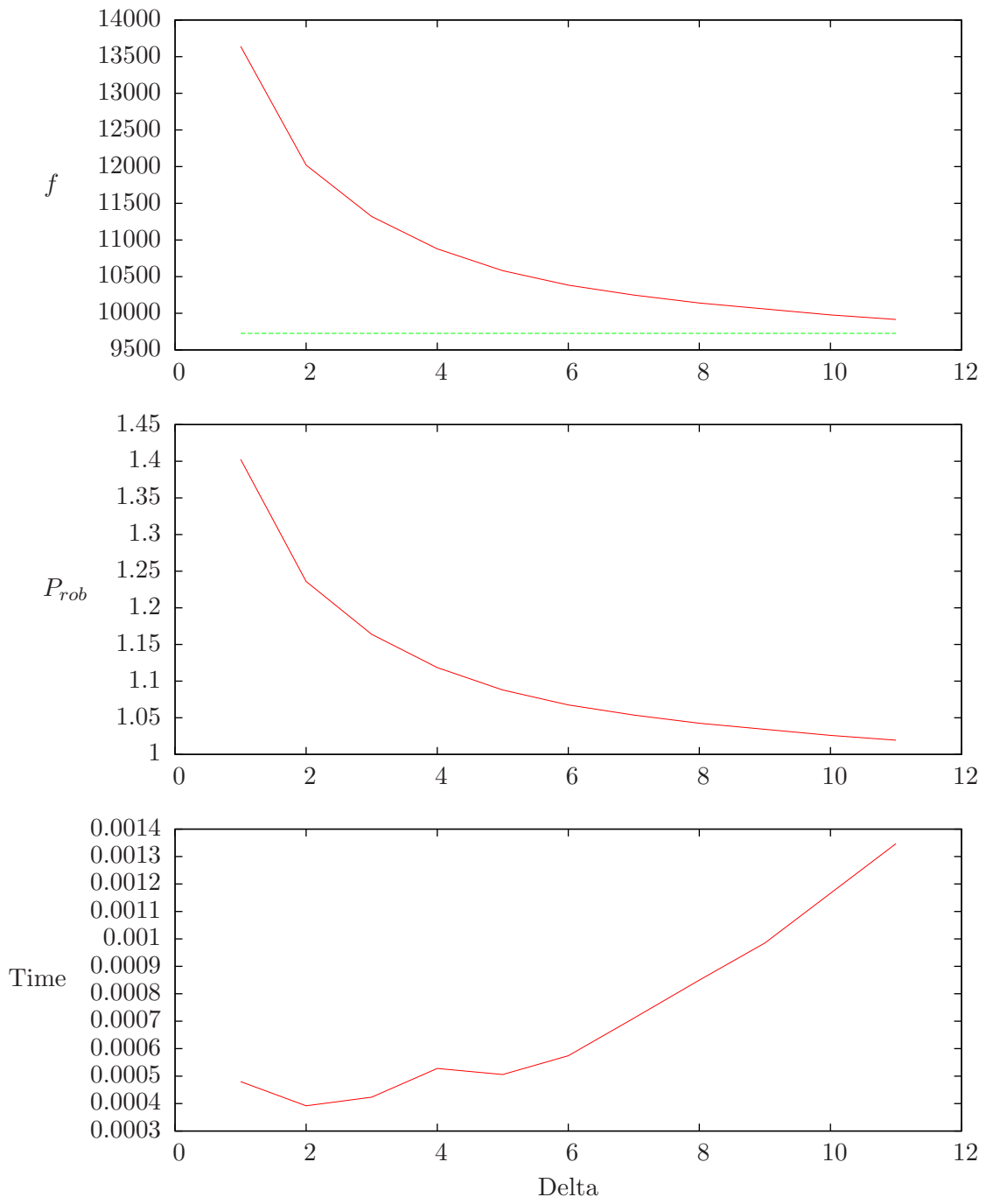
pdbo.txt, real  $L$ ,  $\alpha = 5$



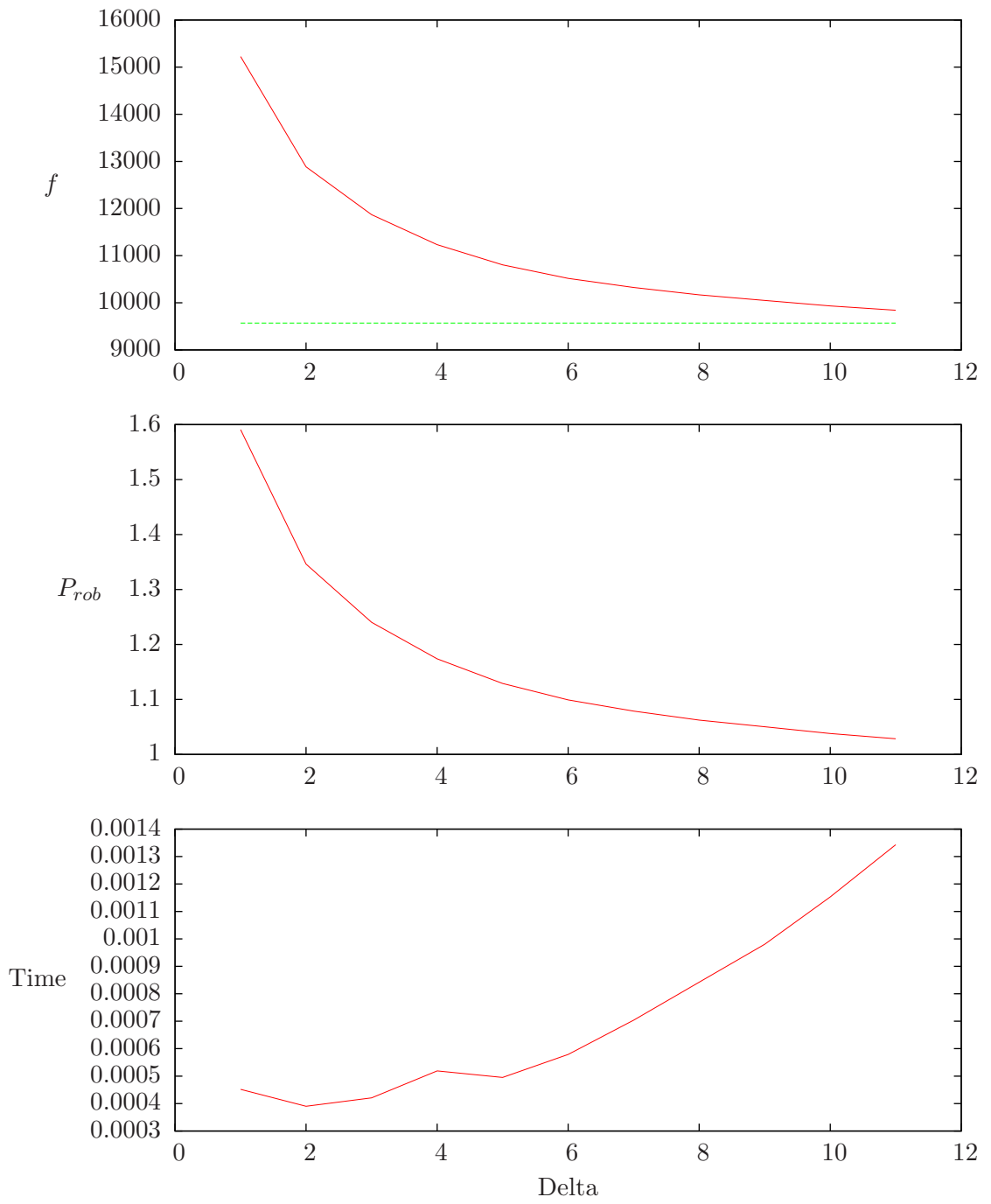
pdbo.txt,  $L = avg$ ,  $\alpha = 9$



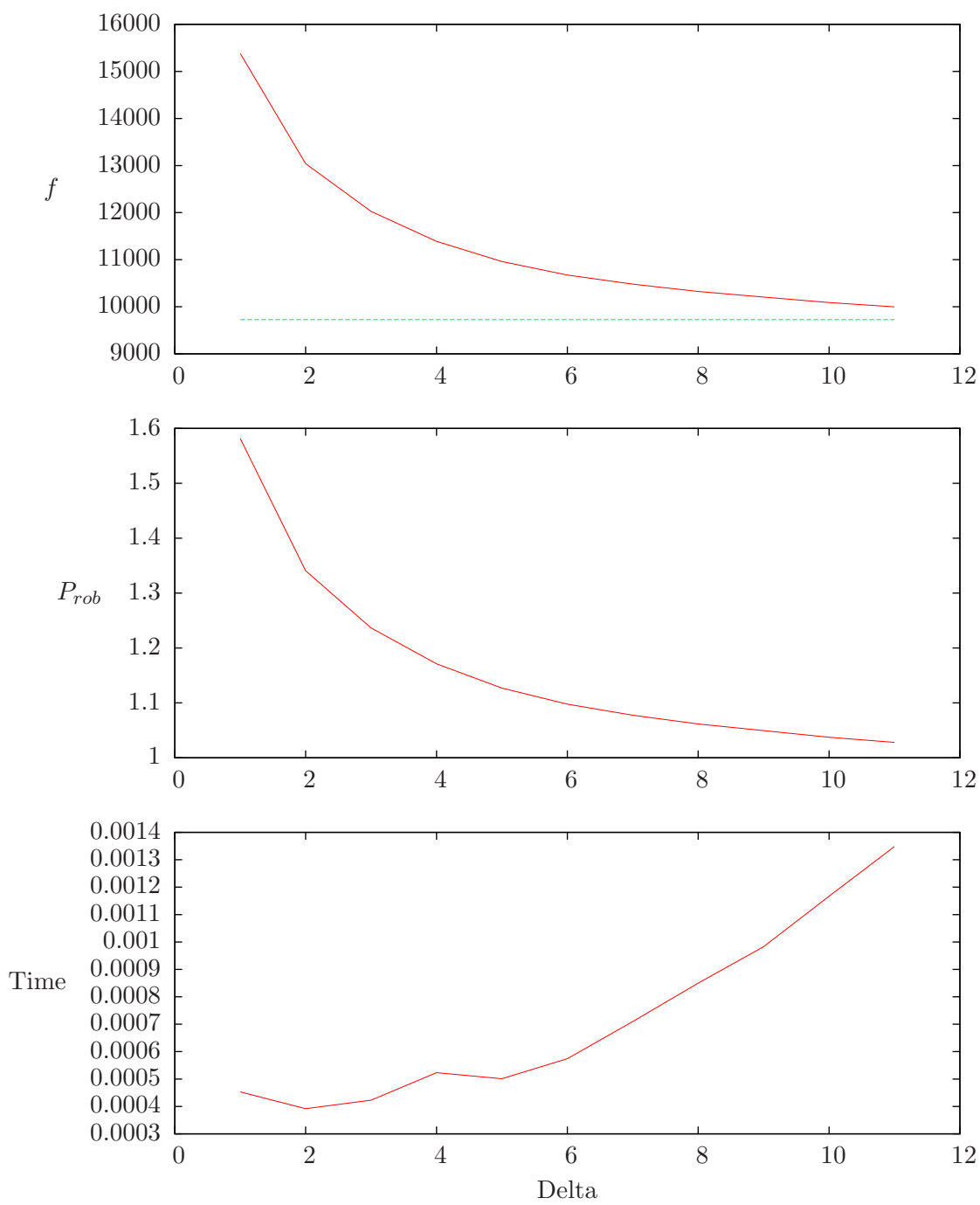
pdbo.txt, real  $L$ ,  $\alpha = 9$



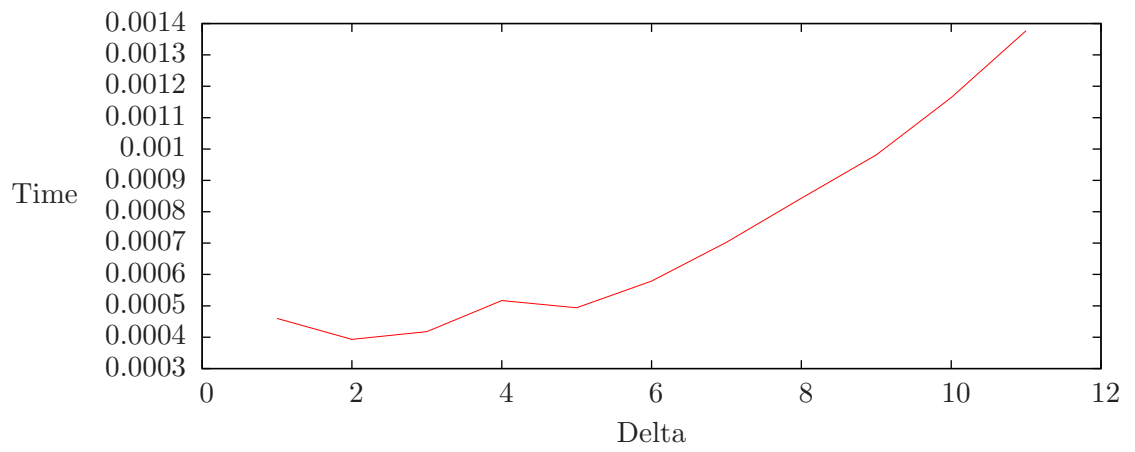
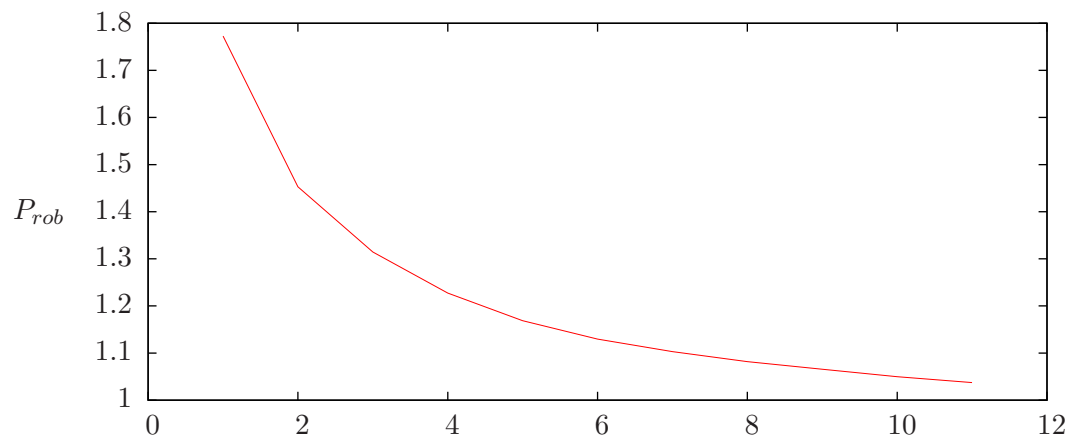
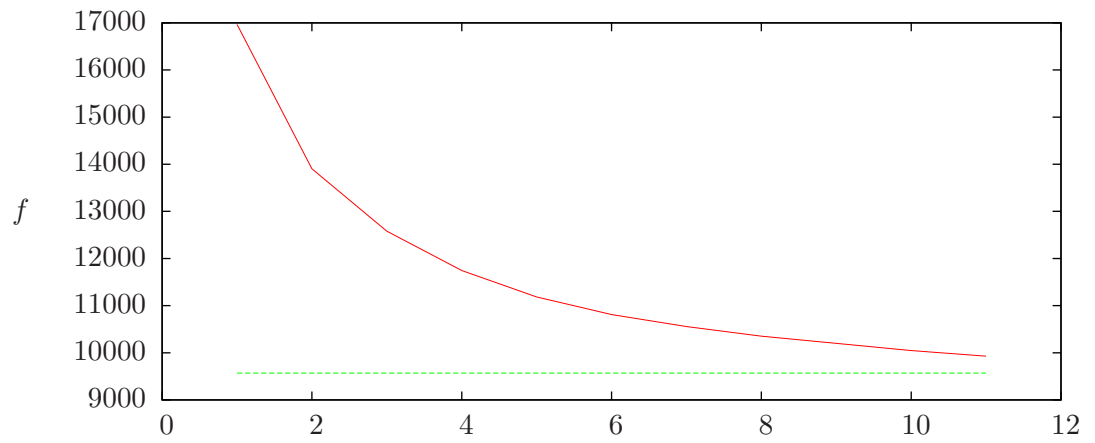
pdbo.txt,  $L = avg$ ,  $\alpha = 13$



pdbo.txt, real  $L$ ,  $\alpha = 13$



pdbo.txt,  $L = avg$ ,  $\alpha = 17$



pdbo.txt, real  $L$ ,  $\alpha = 17$

